

ATIS
127.55
CINC DEL
126.6 239.0
CPDIC
GND CON
121.7
VAN NUYS TOWER ★
119.3 239.0
SOCAL DEP CON
124.6 298.85

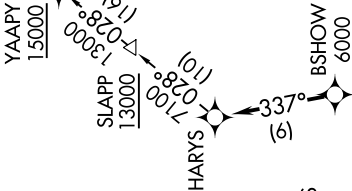
NOTE: DME/DME/IRU or GPS required.
NOTE: RADAR required.
NOTE: RNAV 1.
NOTE: Turbojet and high performance turboprop aircraft only.
NOTE: MISEN transition restricted to aircraft landing LAS terminal area.
NOTE: HAILO transition ATC only.
NOTE: HAILO transition ATC only.
NOTE: Cross DER/VNY VOR/DME 1.5 DME south at or below 1750.

TOP ALTITUDE:
FL230

(HARYS4.HARYS) 20254
HARYS FOUR DEPARTURE (RNAV)

AL-552 (FAA)

VAN NUYS (VNY)
VAN NUYS, CALIFORNIA



TAKEOFF MINIMUMS
Rwys 16L, 34L/R: NA - ATC.
Rwy 16R: Standard with minimum climb
of 450' per NM to 2600.

DEPARTURE ROUTE DESCRIPTION

TAKEOFF RUNWAY 16R: Climb on heading 164° to 1303, then direct PPRY, then on heading 110° or as assigned by ATC, then on vectors to cross BSHOW at or above 6000, then on track 337° to HARYS, thence

. . . . on (transition) maintain FL230. Expect filed altitude 10 minutes after departure.

- BLYTHE TRANSITION (HARYS4.BLH)
- HAILO TRANSITION (HARYS4.HAILO)
- HECTOR TRANSITION (HARYS4.HEC)
- LAS VEGAS TRANSITION (HARYS4.LAS)
- MISEN TRANSITION (HARYS4.MISEN)

NOTE: Chart not to scale.

HARYS FOUR DEPARTURE (RNAV)
(HARYS4.HARYS) 10SEP20

VAN NUYS, CALIFORNIA
VAN NUYS (VNY)