

LOC I- OXR	APP CRS	Rwy Idg	5500
108.7	256°	TDZE	44
		Apt Elev	45

ILS or LOC RWY 25

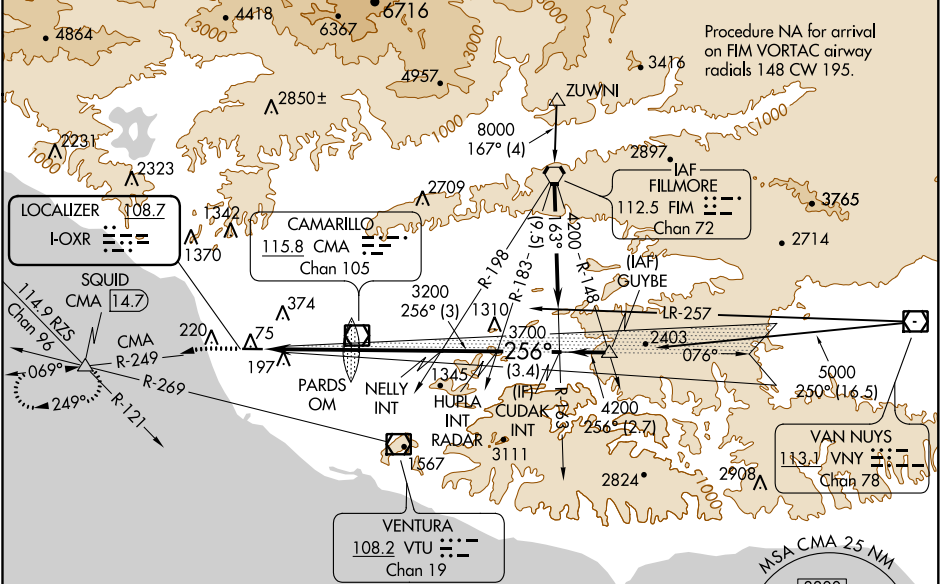
OXNARD (OXR)

⚠ Rwy 25 helicopter visibility reduction below ¾ SM NA. Autopilot coupled approach NA below 867'. Inop table does not apply. When local altimeter setting not received, use Camarillo altimeter setting and increase S-ILS 25 DA to 312 and all MDA 20 feet, increase S-LOC 25 Cat C/D visibility ½ mile, and Circling Cat C visibility ½ mile, Cat D ¼ mile.

MALSF

MISSED APPROACH: Climb to 520 then climbing left turn to 2000 on CMA VOR/DME R-249 to SQUID INT/14.7 DME and hold.

ATIS 118.05	POINT MUGU APP CON ★ 124.7 335.5	OXNARD TOWER ★ 134.95 (CTAF) 0 257.8	GND CON 121.9
-----------------------	--	--	-------------------------



ELEV 45	D	TDZE 44
---------	----------	---------




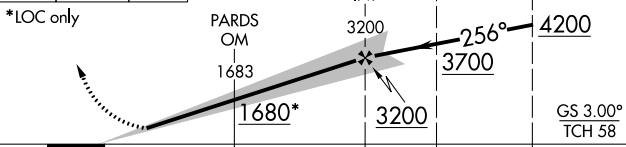
REIL Rwy 7 **MRL Rwy 7-25**

FAF to MAP 9.7 NM

Knots	60	90	120	150	180
Min:Sec	9:42	6:28	4:51	3:53	3:14

TWR 117, **98**, **112**

256° 9.7 NM from FAF

520	2000	SQUID		
				
*LOC only				
				
CATEGORY	A	B	C	D
S-ILS 25	294-1 250 (300-1)			
S-LOC 25	580-1 536 (600-1)		580-1½ 536 (600-1½)	
CIRCLING	580-1 535 (600-1)		580-1½ 535 (600-1½)	700-2 655 (700-2)