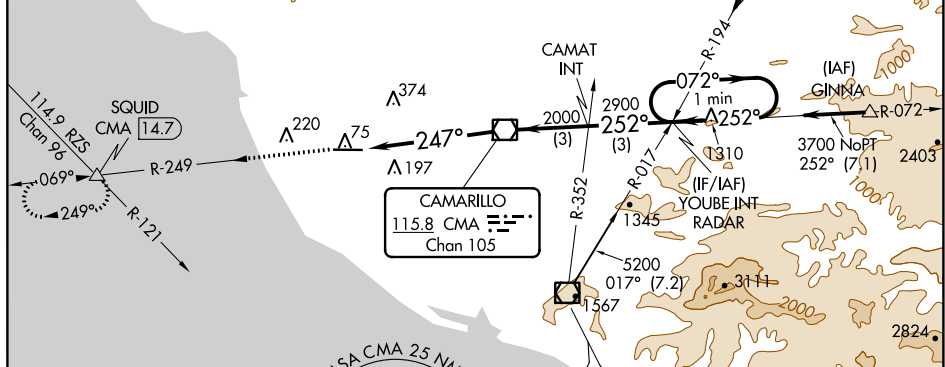


VOR RWY 25
OXNARD (OXR)

MISSED APPROACH: Climb to 2000 on CMA R-249 to SQUID INT/14.7 DME and hold.



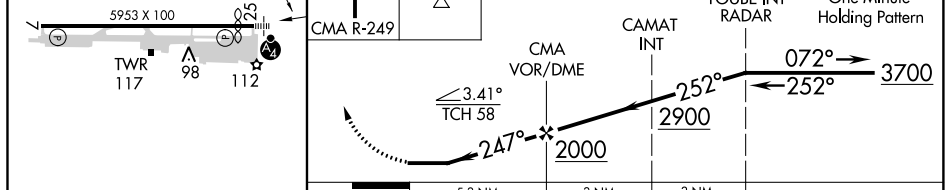
110



REIL Rwy 7 **L**
MIRL Rwy 7-25 **L**

FAF to MAP 5.3 NM					
Knots	60	90	120	150	180
Min:Sec	5:18	3:32	2:39	2:07	1:46

OXNARD, CALIFORNIA
Amdt 10C 06DEC18

SQUID	VGSI and descent angles not coincident (VGSI Angle 3.00/TCH 59).	YOU'RE INT	One Minute
-------	---	------------	------------



REIL Rwy 7 		5.3 NM		3 NM		3 NM	
MIRL Rwy 7-25 		CATEGORY	A	B	C	D	
FAF to MAP 5.3 NM		S-25	540-1 496 (500-1)		540-1 3/8 496 (500-1 3/8)		
Knots	60 90 120 150 180	CIRCLING	540-1 495 (500-1)		540-1 1/2 495 (500-1 1/2)		700-2 655 (700-2)
Min:Sec	5:18 3:32 2:39 2:07 1:46						

OXNARD, CALIFORNIA
Amdt 10C 06DEC18

34°12'N-119°12'W

OXNARD (OXR)
VOR RWY 25