

CAMARILLO, CALIFORNIA

AL-680 (FAA)

20310

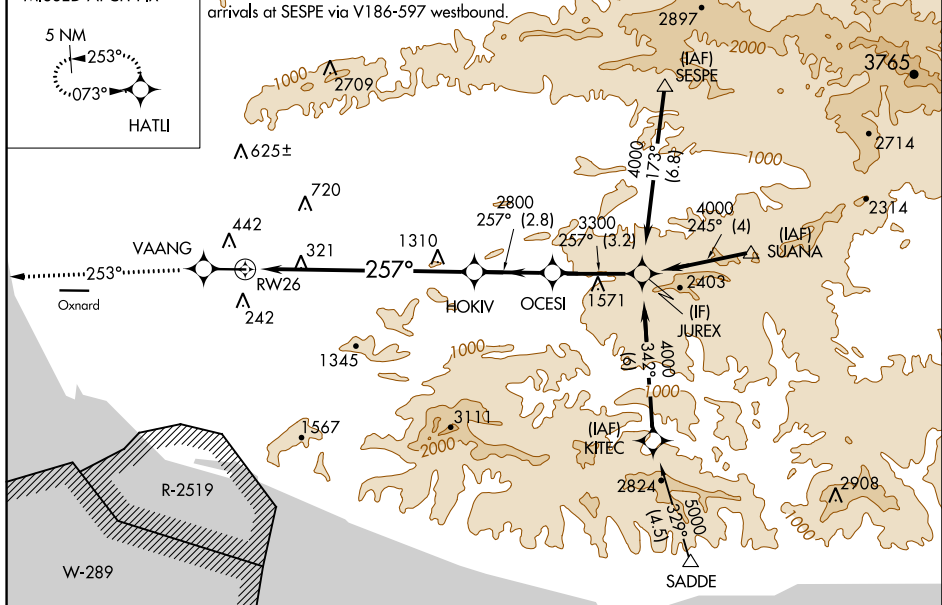
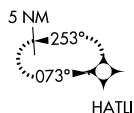
WAAS CH 58202 W26A	APP CRS 257°	Rwy Idg 6013 TDZE 77 Apt Elev 77
----------------------------------------	------------------------	-------------------------------------------------------------

RNAV (GPS) Z RWY 26
CAMARILLO (CMA)

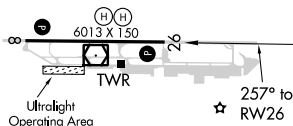
<div><div>VNAW</div><div>DME/DME RNP -0.3 NA. If local altimeter setting not received, use Oxnard altimeter setting and increase DA 18 feet.</div></div>		MISSED APPROACH: Climb to 3000 direct VAANG and via 253° track to HATLI and hold.				
ATIS 126.025	POINT MUGU APP CON ★ 124.7 335.5	CAMARILLO TOWER ★ 128.2 (CTAF) 0 269.4	GND CON 121.8	CLNC DEL 121.8	POINT MUGU CLNC DEL 120.75 279.55	UNICOM 122.95

MISSED APCH FIX

Procedure NA for arrivals at SUANA via V326 eastbound and arrivals at SESPE via V186-597 westbound.



ELEV	77		TDZE	77
------	----	--	------	----

REIL Rwys 8 and 26 **L**MIRL Rwy 8-26 **L**

3000 ↑	VAANG ✦	253° tr	HATU ✦	JUREX Procedure Turn NA	
RW26		HOKIV	OCESI	257°	4000
8.2 NM		2.8 NM	3.2 NM	3300	2800
CATEGORY	A	B	C	D	
LPV DA	327-3/4 250 (300-3/4)				
GP 3.00° TCH 48					

CAMARILLO, CALIFORNIA

Orig-A 27JUN13

34°13'N-119°06'W

CAMARILLO (CMA)

RNAV (GPS) Z RWY 26

SW-3, 03 DEC 2020 to 31 DEC 2020

SW-3, 03 DEC 2020 to 31 DEC 2020