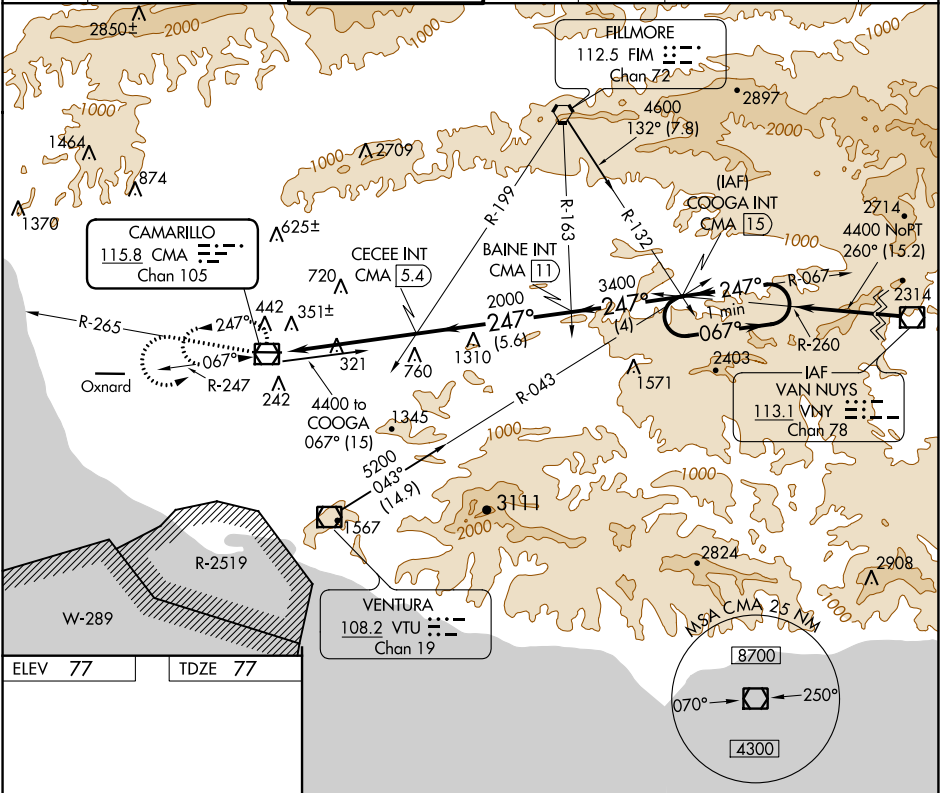


VOR/DME CMA	APP CRS	Rwy Idg	6013
115.8	247°	TDZE	77
Chan 105		Apt Elev	77

VOR RWY 26
CAMARILLO (CMA)

<div><div></div><div></div></div>	Circling not authorized north of Rwy 8/26.	MISSED APPROACH: Climb to 2000 via CMA R-265 then climbing left turn to 4400 direct CMA VOR/DME and hold.
-----------------------------------	--	---

ATIS	POINT MUGU APP CON *	CAMARILLO TOWER *	GND CON	CLNC DEL	POINT MUGU CLNC DEL	UNICOM
126.025	124.7 335.5	128.2 (CTAF) 0 269.4	121.8	121.8	120.75 279.55	122.95



ELEV 77

TDZE 77

247° 4.9 NM from FAF

6013 X 150

TWR

★

Ultralight Operating Area

MIRL Rwy 8-26

REIL Rwy 8 and 26

FAF to MAP 4.9 NM

Knots	60	90	120	150	180
Min:Sec	4:54	3:16	2:27	1:58	1:38

2000

↑

4400

↖

CMA

VGSI and descent angles not coincident

(VGSI Angle 3.00/TCH 48).

CMA R-265

CECEE INT CMA 5.4

BAIN INT CMA 11

COOGA INT CMA 15

One Minute Holding Pattern

067°

→

←

247°

4400

CMA 0.5

↖

3.61°

TCH 48

2000

↗

247°

3400

4.9 NM

5.6 NM

4 NM

CATEGORY	A	B	C	D
S-26	1100-1¼ 1023 (1100-1¼)	1100-1½ 1023 (1100-1½)	1100-3 1023 (1100-3)	NA
CIRCLING	1100-1¼ 1023 (1100-1¼)	1100-1½ 1023 (1100-1½)	1100-3 1023 (1100-3)	NA