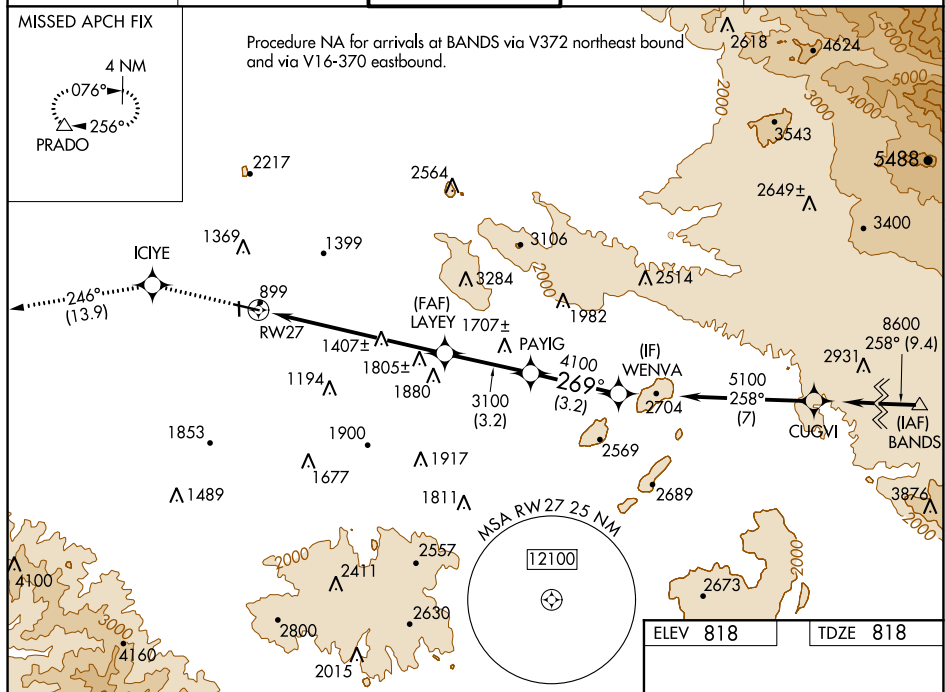
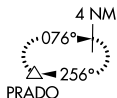


RNAV (GPS) RWY 27
RIVERSIDE MUNI (RAL)

MISSED APPROACH: Climb to 4000 direct ICIYE and via 246° track to PRADO and hold.

MISSED APCH FIX

Procedure NA for arrivals at BANDS via V372 northeast bound and via V16-370 eastbound.



ELEV 818		TDZE 818
----------	--	----------

MIRL Rwy 9-27 and 16-34 **L**