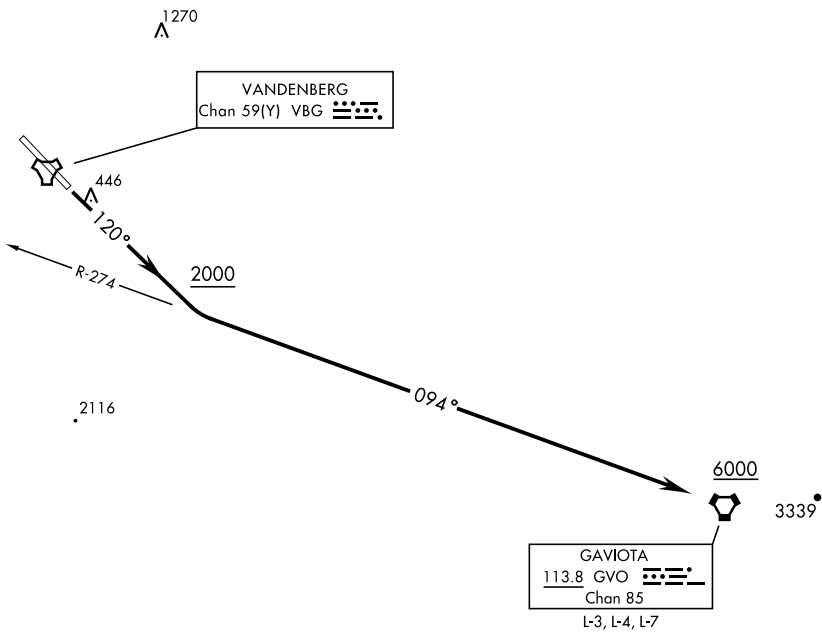


ATIS 133.125 257.975 GND CON 121.75 275.8 CLNC DEL 121.75 275.8 VANDENBERG TOWER ★ 124.95 326.2 SANTA BARBARA DEP CON 124.15 327.8	SL-770 [USAF]	Rwy	Knots	60	120	180	240	300	360
		12	V/V(fpm)	330	660	990	1320	1650	1980

Minimum Climb Rate to 1500.



▼

DEPARTURE ROUTE DESCRIPTION

TAKE-OFF RWY 12: Climb on track 120° to 2000. Then climbing left turn to intercept the GVO VORTAC R-274 inbound to GVO. Cross GVO at or above 6000. Expect vectors to first filed fix/route prior to GVO.