

## HI-ILS or LOC/DME RWY 30

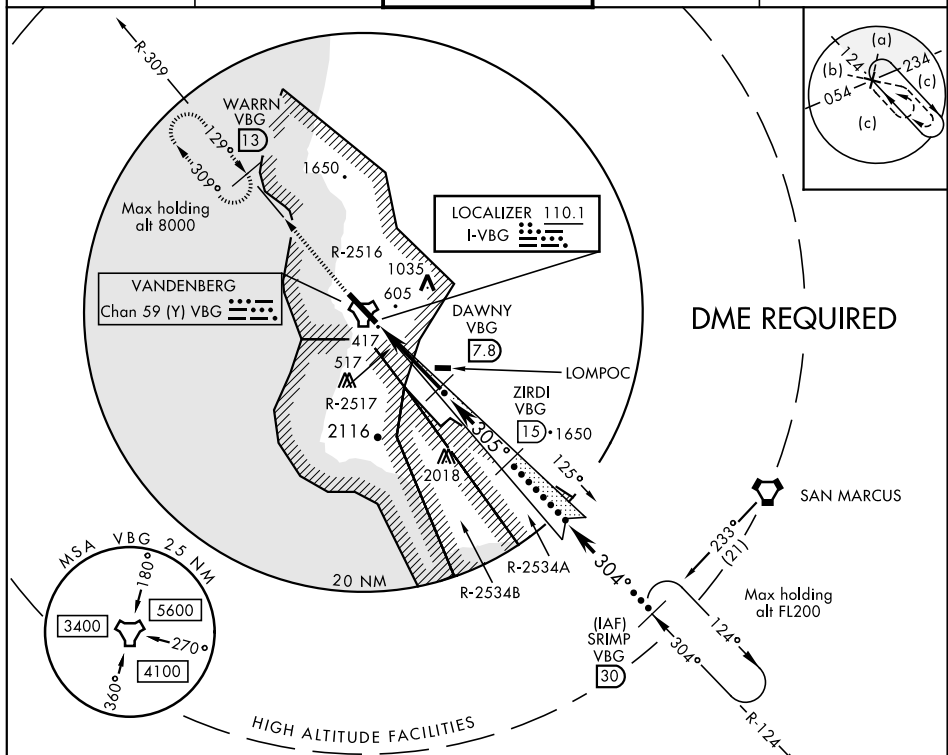
LOC I-VBG <b>110.1</b>	APCH CRS <b>305°</b>	Rwy Idg <b>15,000</b> TDZE <b>368</b> Arpt Elev <b>368</b>	JAL-770 [USAF]	VANDENBERG AFB (KVBG)
---------------------------	-------------------------	--	----------------	-----------------------

▼ \* When ALS inop, increase CAT CDE RVR to 40 and vis to ¾ mile.  
 \*\* When ALS inop, increase CAT CDE vis to 1½ miles.

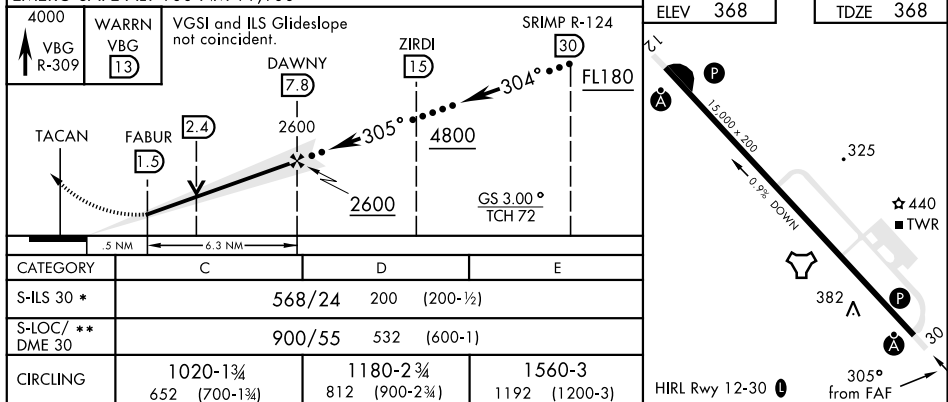


MISSED APPROACH: Climb out VBG TACAN R-309 to WARRN and hold. Continue climb in hold maintain 4000.

ATIS <b>133.125 257.975</b>	SANTA BARBARA APP/DEP CON <b>124.15 327.8</b>	VANDENBERG TOWER ★ <b>124.950</b> (CTAF) <b>326.2</b>	GND CON <b>121.75 275.8</b>	CLNC DEL <b>121.75 275.8</b>
--------------------------------	---	--	--------------------------------	---------------------------------



EMERG SAFE ALT 100 NM 11,100



## HI-ILS or LOC/DME RWY 30