

| | | |
|--------------------------------|-------------------------|--|
| TACAN VBG Chan 59(Y) | APCH CRS 299° | Rwy Idg 15,000 TDZE 368 Arpt Elev 368 |
|--------------------------------|-------------------------|--|

VANDENBERG AFB (KVBG)

* When ALS inop, increase CAT CDE vis to 15% miles.

MISSED APPROACH: Climb out VBG TACAN R-309 to WARRN and hold. Continue climb in hold maintain 4000.

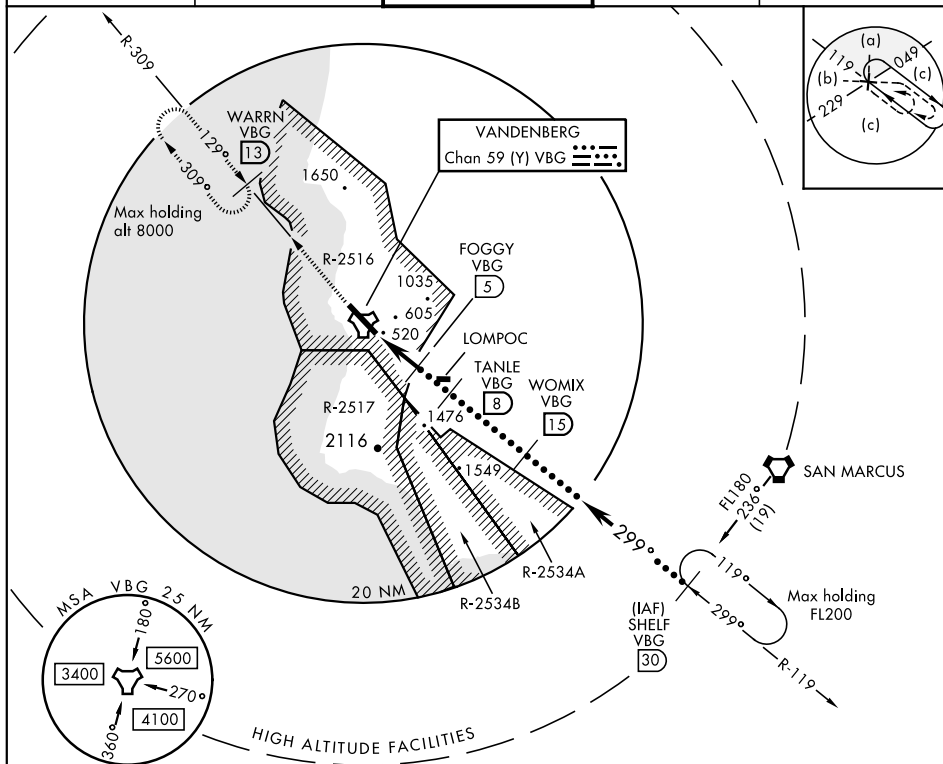
ATIS
133.125 257.975

SANTA BARBARA
APP/DEP CON
124.15 327.8

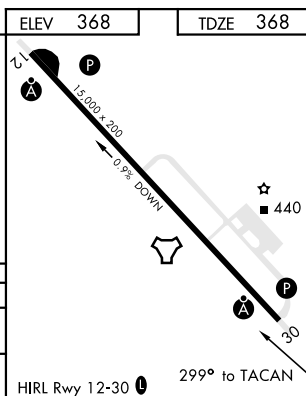
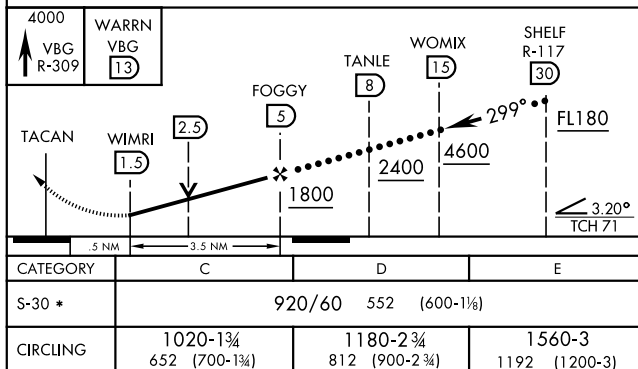
VANDENBERG TOWER ★
124.950 (CTAF) 326.2

GND CON
121.75 275.8

CLNC DEL
121.75 275.8



EMERG SAFE ALT 100 NM 11,100



LOMPOC, CALIFORNIA

34°44'N-120°35'W

VANDENBERG AFB (KVBG)

Amdt 4 28FEB19

HI-TACAN RWY 30