

TACAN RWY 30

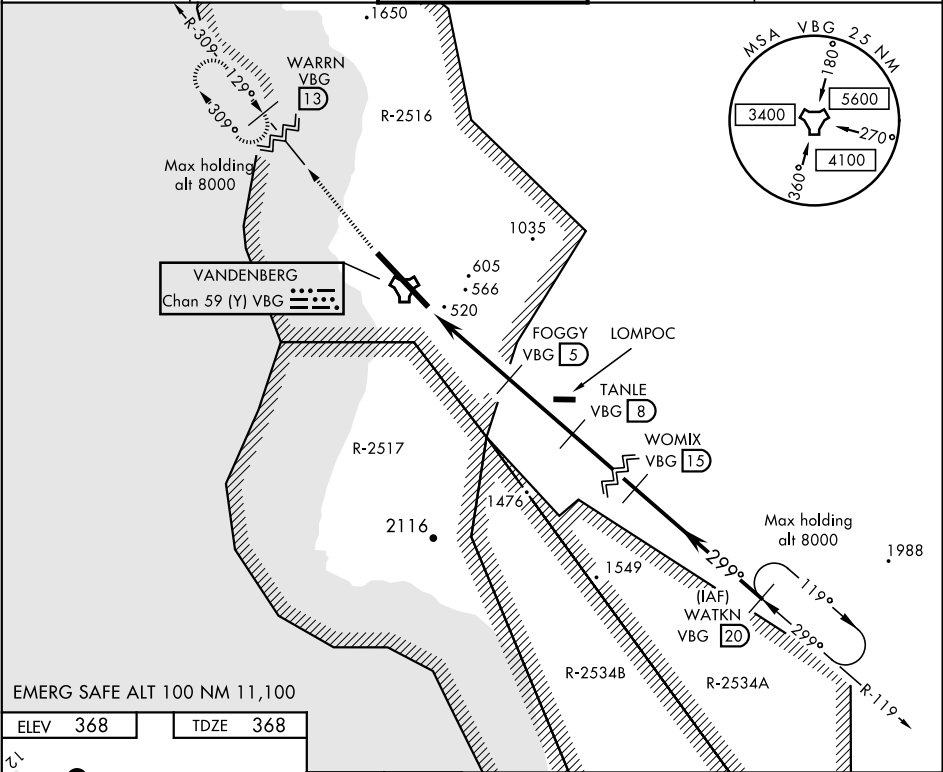
TACAN VBG Chan <b>59(Y)</b>	APCH CRS <b>299°</b>	Rwy Idg <b>15,000</b> TDZE <b>368</b> Arpt Elev <b>368</b>
--------------------------------	-------------------------	--

AL-770 [USAF]

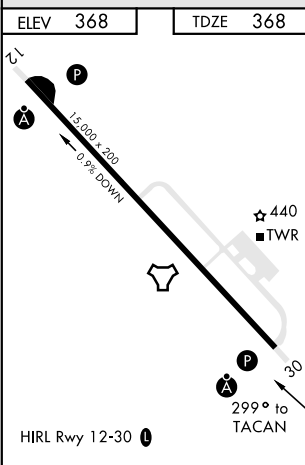
VANDENBERG AFB (KVBG)

<b>▼</b> * When ALS inop, increase CAT AB RVR to 55 and vis to 1 mile, CAT CDE vis to 1½ miles.	ALSF-2 	MISSED APPROACH: Climb out VBG TACAN R-309 to WARRN and hold. Continue climb in hold maintain 4000.
---	------------	---

ATIS <b>133.125 257.975</b>	SANTA BARBARA APP/DEP CON <b>124.15 327.8</b>	VANDENBERG TOWER ★ <b>124.950</b> (CTAF) <b>326.2</b>	GND CON <b>121.75 275.8</b>	CLNC DEL <b>121.75 275.8</b>
--------------------------------	---	--	--------------------------------	---------------------------------



EMERG SAFE ALT 100 NM 11,100



	4000 VBG R-309	WARRN VBG 13							
	TACAN	WIMRI 1.5	2.5	FOGGY 5	TANLE 8	WOMIX 15	WATKN R-119 20	6000	
		1.5 NM	3.5 NM						
CATEGORY	A	B	C	D	E				
S-30 *	920/24	552 (600-½)	920/60	552	(600-1½)				
CIRCLING	980-1 612 (700-1)	1000-1 632 (700-1)	1020-1¾ 652(700-1¾)	1180-2¾ 812(900-2¾)	1560-3 1192(1200-3)				

TACAN RWY 30

SW-3, 03 DEC 2020 to 31 DEC 2020

SW-3, 03 DEC 2020 to 31 DEC 2020