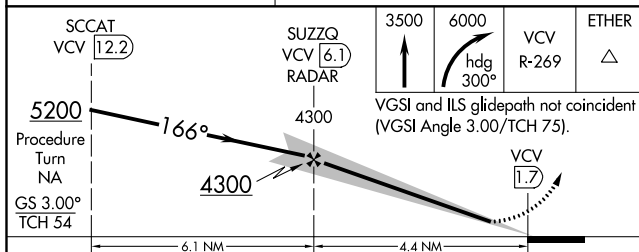
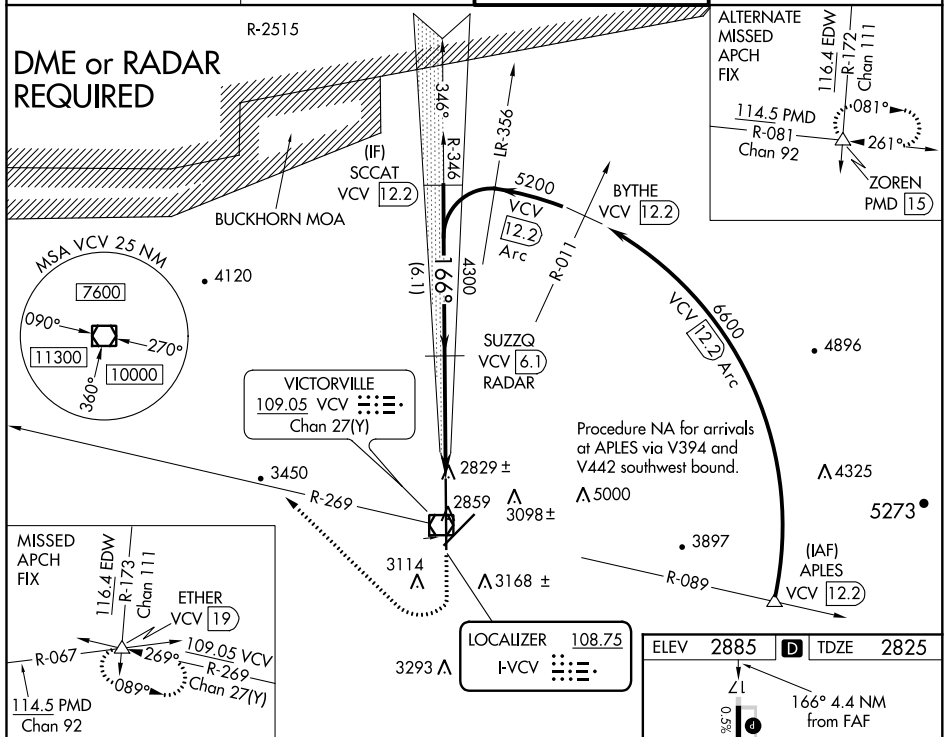


ILS or LOC RWY 17  
SOUTHERN CALIFORNIA LOGISTICS (VCV)

- |  |  |
|--|--|
| <p><b>▼</b> When local altimeter setting not received, use Edwards AFB altimeter setting and increase all DA and MDA 160 feet. Increase all visibilities ½ mile.</p> <p><b>▲</b> DME from VCV VOR/DME. Simultaneous reception of I-VCV and VCV DME required.</p> | <p><b>MISSED APPROACH:</b> Climb to 3500, then climbing right turn to 6000 via heading 300° and VCV VOR/DME R-269 to ETHER INT and</p> |
|--|--|

ATIS ★ 135.475	JOSHUA APP CON 124.55 363.0	VICTORVILLE TOWER ★ 118.35(CTAF) 0 282,225	GND CON 124.45
-------------------	--------------------------------	---	-------------------



CATEGORY	A	B	C	D
S-ILS 17	3025/40 200 (200-¾)			
S-LOC 17	3080/50 255 (200-1)			
CIRCLING	3360-1 475 (500-1)	3420-1 535 (600-1)	3420-1½ 535 (600-1½)	3580-2¼ 695 (700-2¼)

