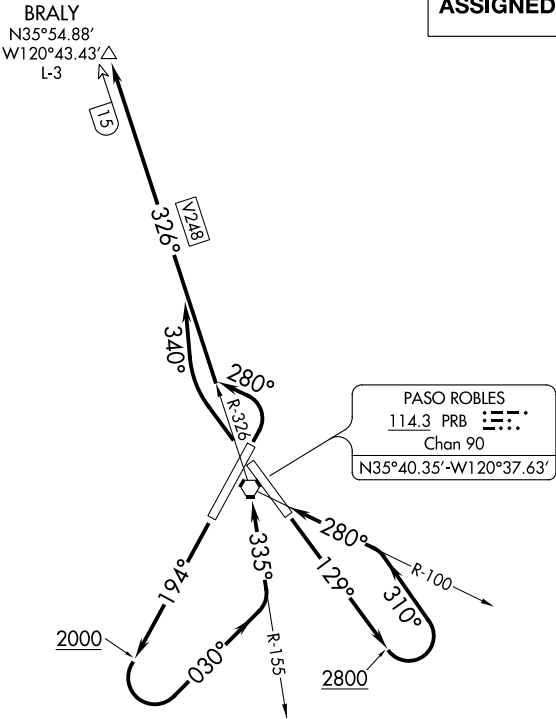


(BRALY1.BRALY) 20142  
BRALY ONE DEPARTURE

AL-858 (FAA) PASO ROBLES MUNI (PRB)  
PASO ROBLES, CALIFORNIA

ASOS  
120.125  
OAKLAND CENTER  
128.7 307.0  
CTAF  
123.0

TOP ALTITUDE:  
ASSIGNED BY ATC



NOTE: DME required.

TAKEOFF MINIMUMS

- Rwy 1: Standard with minimum climb of 235' per NM to 2200.  
Rwy 13: Standard with minimum climb of 220' per NM to 1700.  
Rwy 19: Standard.  
Rwy 31: Standard with minimum climb of 235' per NM to 2200.

NOTE: Chart not to scale.



DEPARTURE ROUTE DESCRIPTION

TAKEOFF RUNWAY 1: Climbing left turn on heading 280° to intercept PRB VORTAC R-326 to BRALY/PRB 15 DME, thence. . . .  
TAKEOFF RUNWAY 13: Climb on heading 129° to 2800 then climbing left turn heading 310° to intercept PRB VORTAC R-100 to PRB VORTAC, then on R-326 to BRALY/PRB 15 DME, thence. . . .  
TAKEOFF RUNWAY 19: Climb on heading 194° to 2000 then climbing left turn heading 030° to intercept PRB VORTAC R-155 to PRB VORTAC, then on R-326 to BRALY/PRB 15 DME, thence. . . .  
TAKEOFF RUNWAY 31: Climbing right turn heading 340° and PRB VORTAC R-326 to BRALY/PRB 15 DME, thence. . . .  
. . . . maintain ATC assigned altitude; expect clearance to filed altitude 10 minutes after departure.