
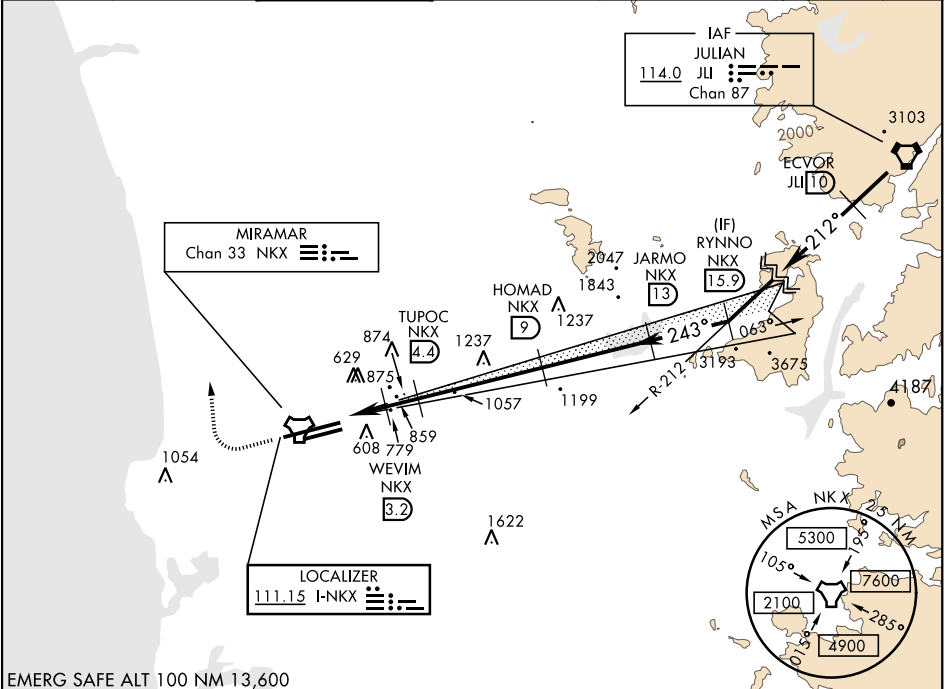


ILS or LOC/DME RWY 24R

LOC I-NKX	APCH CRS	Rwy Idg	24L	24R
111.15	243°	TDZE	8001	12,000
		Arpt Elev	477	475
			477	477

AL-903 [USN] MIRAMAR MCAS (JOE FOSS FLD) (KNKX)

RADAR required.				MISSED APPROACH: Climb to 1500, then climbing right turn to 3000 via heading 340°. Expect radar vectors.		
<div><div><div>▼</div><div>** When ALS inop, increase CAT ABCDE vis to ¾ mile.</div><div>** When ALS inop, increase CAT AB vis to 1 mile, CAT CDE vis to 1 ½ miles.</div><div>*** CAT E circling not authorized S of Rwy 6R-24L.</div></div></div>						
ATIS ★	SOCAL APP CON	FOSS TOWER ★	GND CON	CLNC DEL	LA CENTER	ASR/ PAR
133.475 352.0	132.2 269.1	135.2 298.925 0	128.625 307.325	125.975 254.325	291.7	



EMERG SAFE ALT 100 NM 13,600

1500

3000

hdg
340°

VGSI and descent
angles not coincident.

JARMO NKX 13

RYNNO NKX 15.9

ECVOR JLI 10

VORTAC

8000

NKC TACAN

ZENPA NKX 1.8

WEVIM NKX 3.2

TUPOC NKX 4.4

2998

3800

4700

6900

1200

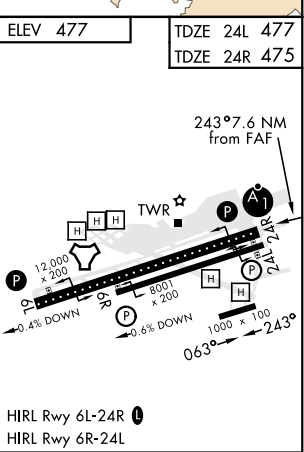
1600

3000

GS 3.00°

TCH 53

CATEGORY	A	B	C	D	E
S-ILS 24R *	675 - ½		200	(200- ½)	
S-LOC/ DME 24R **	920- ½	445 (500- ½)	920- ¾	445 (500- ¾)	
SIDESTEP 24L	920-1	443 (500-1)	920-1 ¾	443 (500-1 ¾)	
CIRCLING ***	940-1 463 (500-1)	960-1 483 (500-1)	960-1 ½ 483 (500-1 ½)	1180-2 ¼ 703 (800-2 ¼)	1360-3 883 (900-3)



ILS or LOC/DME RWY 24R