

SAN DIEGO, CALIFORNIA

20310

RNAV (GPS) RWY 24L

WAAS CH 54028 W24A	APCH CRS 243°	Rwy Idg TDZE Arpt Elev	8001 477 477
--------------------------	------------------	------------------------------	--------------------

AL-903 [USN]

MIRAMAR MCAS (JOE FOSS FLD) (KNKX)

DME/DME RNP-0.3 NA.

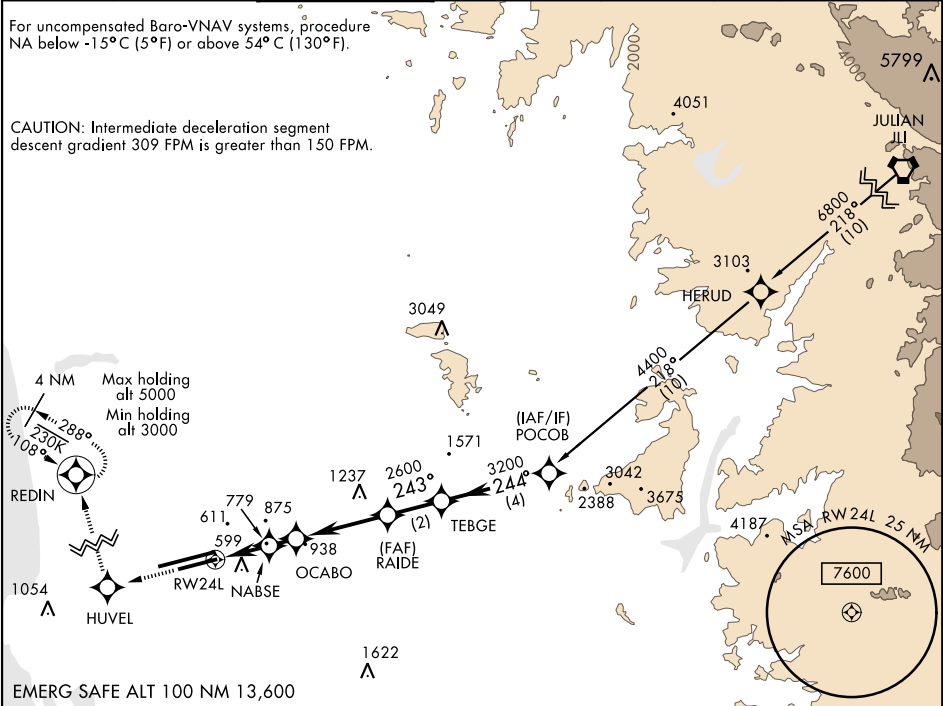


MISSED APPROACH: Climb to 3000 direct HUVEL, 288° track to REDIN and hold.

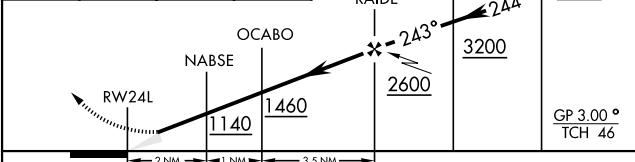
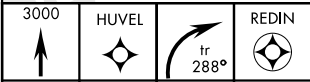
ATIS ★ 133.475 352.0	SOCAL APP CON 132.2 269.1	FOSS TOWER ★ 135.2 298.925 0	GND CON 128.625 307.325	CLNC DEL 125.975 254.325	LA CENTER 291.7	ASR/ PAR
----------------------------	---------------------------------	------------------------------------	-------------------------------	--------------------------------	--------------------	-------------

For uncompensated Baro-VNAV systems, procedure NA below -15°C (5°F) or above 54°C (130°F).

CAUTION: Intermediate deceleration segment descent gradient 309 FPM is greater than 150 FPM.

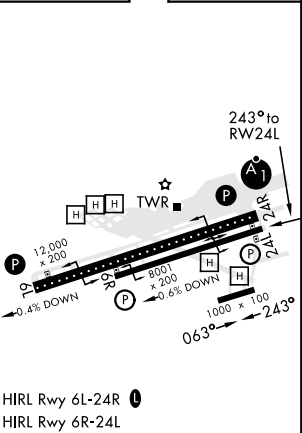


EMERG SAFE ALT 100 NM 13,600



CATEGORY	A	B	C	D
LPV DA	677- $\frac{3}{4}$	200	(200- $\frac{3}{4}$)	
LNAV/VNAV DA	733- $\frac{7}{8}$ 256 (300- $\frac{7}{8}$)	744- $\frac{7}{8}$ 267 (300- $\frac{7}{8}$)	752- $\frac{7}{8}$ 275 (300- $\frac{7}{8}$)	763- $\frac{7}{8}$ 286 (300- $\frac{7}{8}$)
LNAV MDA	1040-1 563 (600-1)		1040-1 $\frac{5}{8}$ 563 (600-1 $\frac{5}{8}$)	
CIRCLING	1040-1 563 (600-1)		1040-1 $\frac{5}{8}$ 563 (600-1 $\frac{5}{8}$)	1180-2 $\frac{1}{4}$ 703 (800-2 $\frac{1}{4}$)

ELEV 477	TDZE 477
----------	----------



SAN DIEGO, CALIFORNIA

32°52'N-117°09'W

MIRAMAR MCAS (JOE FOSS FLD) (KNKX)

Amtd 3 13SEP18

RNAV (GPS) RWY 24L

SW-3, 03 DEC 2020 to 31 DEC 2020

SW-3, 03 DEC 2020 to 31 DEC 2020