

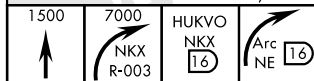
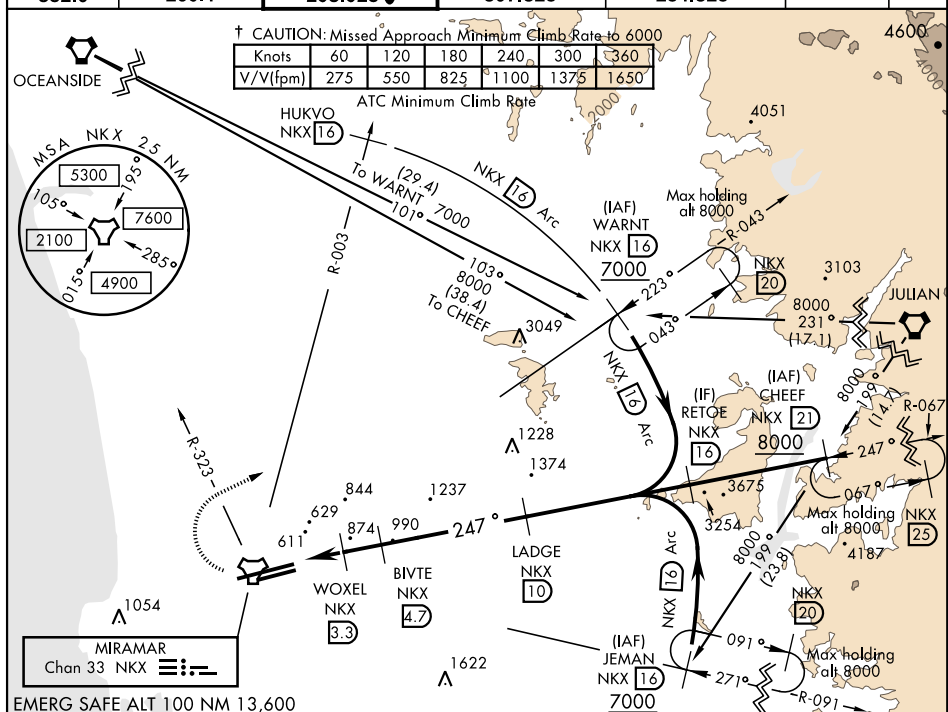
TACAN NKX Chan <b>33</b>	APCH CRS <b>247°</b>	Rwy Idg 24R <b>12,000</b> TDZE 24R <b>475</b> Arpt Elev <b>477</b>	24L <b>8001</b> 24L <b>477</b>
-----------------------------	-------------------------	--	-----------------------------------

MIRAMAR MCAS (JOE FOSS FLD) (KNKX)

ALSF-1

A<sub>1</sub>

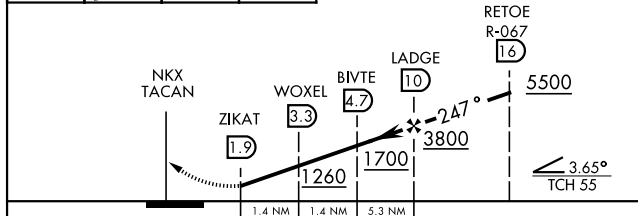
† MISSED APPROACH: Climb to 1500, then climbing right turn to 7000 via NKX TACAN R-003 to HUKVO. Arc NE of NKX via the 16 mile arc to WARNT and hold. Cross NKX R-323 at 3000 mandatory, cross HUKVO at 6000 mandatory.

ASR/  
PAR

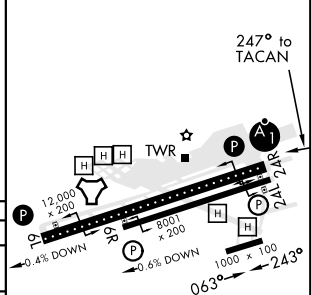
VGS1 and descent angles not coincident.

FIFV 477

TDZE	24R	475
TDZE	24L	477



CATEGORY	A	B	C	D
S-24R *	1140- ½ 665 (700-½)		1140-1½ 665 (700-1½)	
SIDE-STEP 24L	1140-1 663 (700-1)		1140-1⅞ 663 (700-1⅞)	
CIRCLING	1140-1 663 (700-1)		1140-1⅞ 663 (700-1⅞)	1180-2¼ 703 (800-2¼)



SAN DIEGO, CALIFORNIA

32°52'N-117°09'W

MIRAMAR MCAS (JOE FOSS FLD) (KNKX)

Amdt 3 13SEP18

## TACAN RWY 24R

SW-3, 03 DEC 2020 to 31 DEC 2020