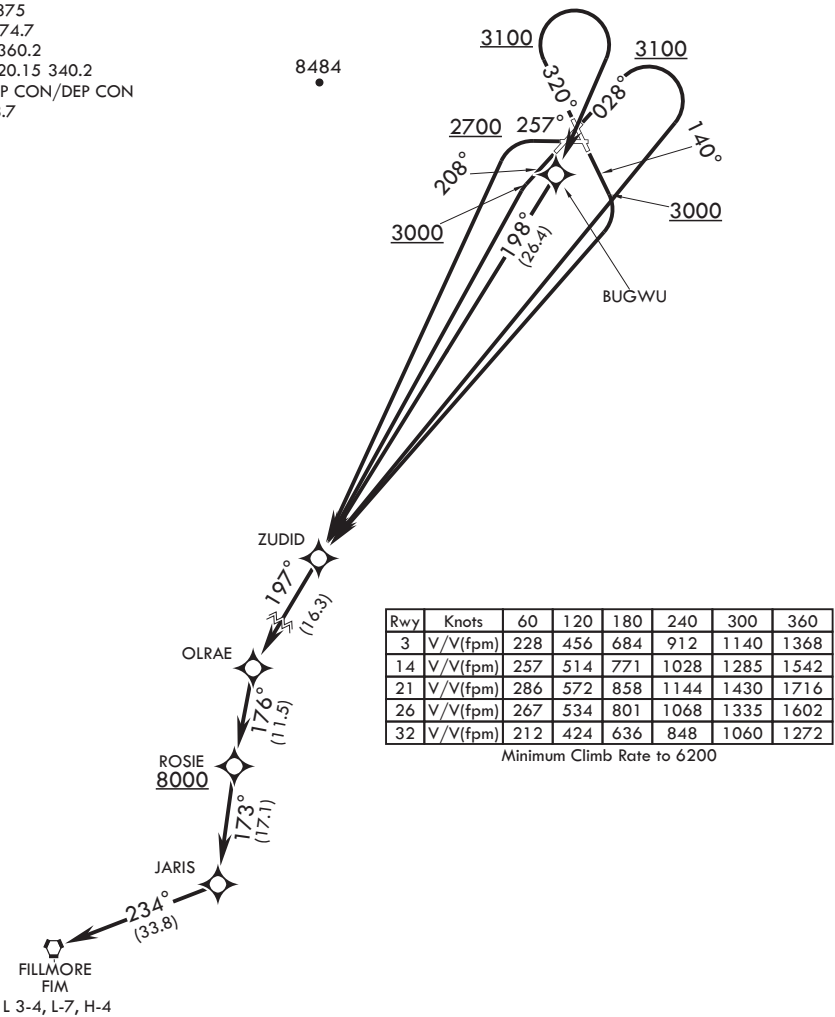


SW-3, 03 DEC 2020 to 31 DEC 2020

ATIS * 322.375
CLNC DEL 274.7
GND CON 360.2
TOWER * 120.15 340.2
JOSHUA APP CON/DEP CON
133.65 348.7



▼

DEPARTURE ROUTE DESCRIPTION

TAKE-OFF RWY 3: Climb heading 028° to 3100, then climbing right turn direct ZUDID. Thence...

TAKE-OFF RWY 14: Climb heading 140° to 3000, then climbing right turn direct ZUDID. Thence...

TAKE-OFF RWY 21: Climb heading 208° to 3000, then climbing left turn direct ZUDID. Thence...

TAKE-OFF RWY 26: Climb heading 257° to 2700, then climbing left turn direct ZUDID. Thence...

TAKE-OFF RWY 32: Climb heading 320° to 3100, then climbing right turn direct BUGWU, then direct ZUDID. Thence...

...from over ZUDID proceed via depicted route to FILLMORE VORTAC. Cross ROSIE at or above 8000 or as assigned.

ROSIE FOUR DEPARTURE (RNAV) (OBSTACLE) (ROSIE4.ROSIE)

RIDGECREST, CALIFORNIA

Orig 10SEP20

CHINA LAKE NAWS (ARMITAGE FLD) (KNID)

SW-3, 03 DEC 2020 to 31 DEC 2020