

RIDGECREST, CALIFORNIA

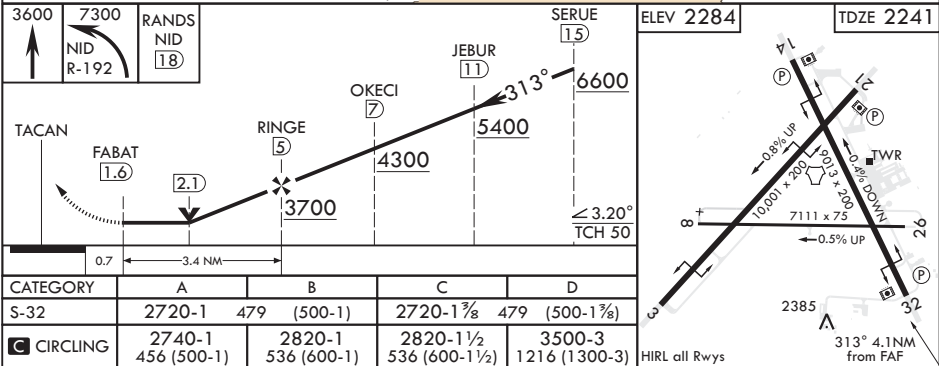
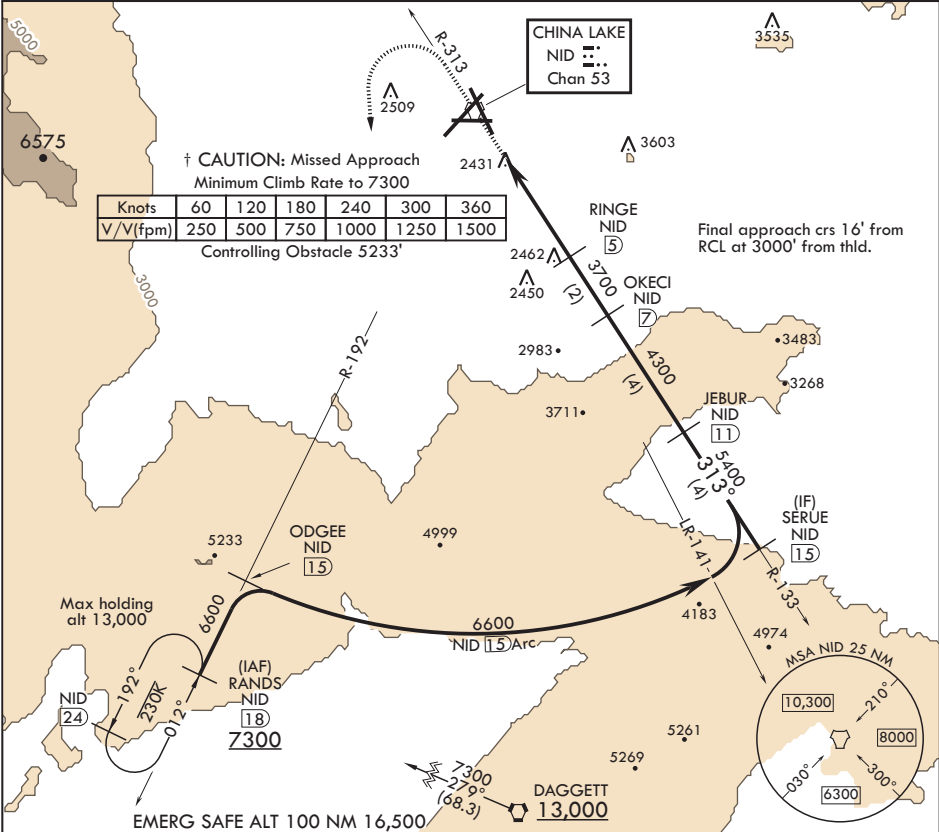
TACAN RWY 32

TACAN NID Chan 53	APCH CRS 313°	Rwy ldg TDZE Arpt Elev	9013 2241 2284
----------------------	------------------	------------------------------	----------------------

AL-914 (USN) CHINA LAKE NAWS (ARMITAGE FLD) (KNID)

† MISSED APPROACH: Climb to 3600 then a climbing left turn to 7300 to intercept China Lake TACAN R-192 to RANDS and hold.			
---	--	--	--

ATIS★ 322.375	JOSHUA APP CON/DEP CON 133.65 348.7	TOWER★ 120.15 340.2	GND CON 360.2	CLNC DEL 274.7
------------------	--	------------------------	------------------	-------------------



RIDGECREST, CALIFORNIA

35°41'N - 117°42'W

CHINA LAKE NAWS (ARMITAGE FLD) (KNID)

Amdt 5 10SEP20

TACAN RWY 32

SW-3, 03 DEC 2020 to 31 DEC 2020

SW-3, 03 DEC 2020 to 31 DEC 2020