

# ILS Y or LOC/DME RWY 21

LOC/DME I-RRG <b>109.3</b> Chan 30	APCH CRS <b>212°</b>	Rwy Idg <b>11,102</b> TDZE <b>13</b> Arpt Elev <b>13</b>
--	-------------------------	--

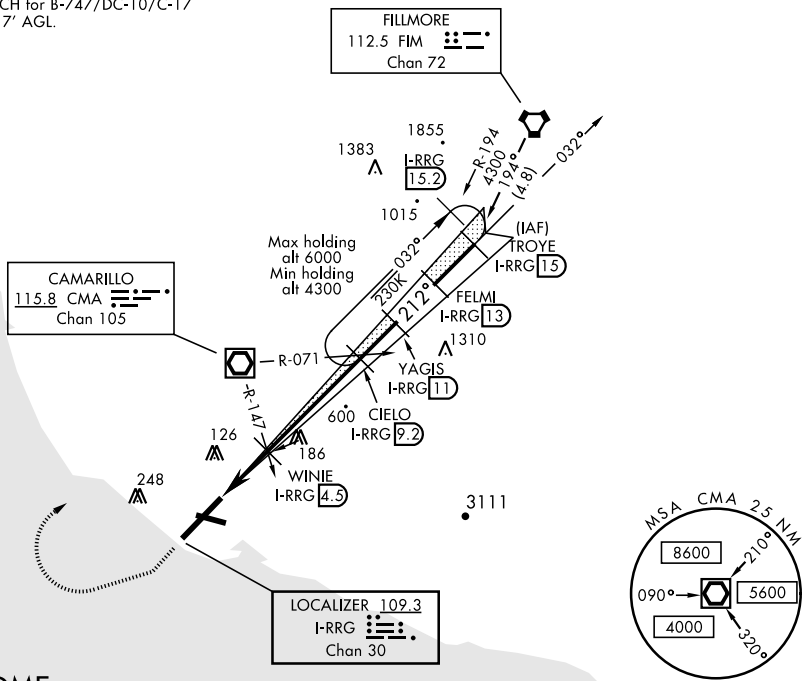
AL-925 [USN]

POINT MUGU NAS  
(NAVAL BASE VENTURA CO)(KNTD)

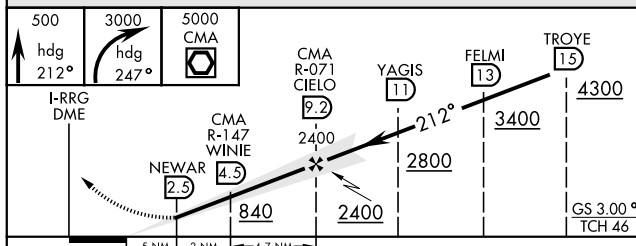
<p>▼ * When ALS inop, increase vis CAT ABCD to ¾ mile. ** When ALS inop, increase vis CAT AB to 1 mile, CAT CD vis to 1½ miles. *** Circling not authorized E of Rwy 3-21.</p>	<p>MALSR A5</p>	<p>MISSED APPROACH: Climb to 500 via hdg 212°, then climbing right turn to 3000 via hdg 247°, then climbing right turn to 5000 direct CMA VOR/DME, then via CMA R-071 to CIELO and hold.</p>
--	---------------------	--

<p>ATIS ★ <b>125.55 363.05</b></p>	<p>POINT MUGU APP CON <b>128.65 307.275</b></p>	<p>POINT MUGU TOWER ★ <b>124.85 290.375</b></p>	<p>GND CON <b>121.6 360.2</b></p>	<p>CLNC DEL <b>120.75 279.55</b></p>	<p>ASR/ PAR</p>
--	---	---	---------------------------------------	--	-----------------

CAUTION: WCH for B-747/DC-10/C-17 type aircraft 17' AGL.



**DME or RADAR REQUIRED**  
EMERG SAFE ALT 100 NM 12,100



ELEV 13	212° 7.2 NM from FAF
TDZE 13	

FAF to MAP 6.7 NM	Knots	60	90	120	150	180
Min:Sec	6:42	4:28	3:21	2:41	2:14	

CATEGORY	A	B	C	D
S-ILS 21*	213-½	200	(200-¾)	
S-LOC 21**	420-½	407 (500-½)	420-¾	407 (500-¾)
CIRCLING ***	440-1	480-1	480-1½	580-2
	427 (500-1)	467 (500-1)	467 (500-1½)	567 (600-2)

OXNARD, CALIFORNIA  
Amdt 2 27APR17

34°07'N-119°07'W

POINT MUGU NAS (KNTD)  
(NAVAL BASE VENTURA CO)

# ILS Y or LOC/DME RWY 21

SW-3, 03 DEC 2020 to 31 DEC 2020

SW-3, 03 DEC 2020 to 31 DEC 2020