

OXNARD, CALIFORNIA

TACAN Y or VOR/DME RWY 3

VORTAC FIM 112.5 Chan 72	APCH CRS 025°	Rwy Idg 11,102 TDZE 10 Arpt Elev 13
--	-------------------------	--

AL-925 [USN] POINT MUGU NAS (NAVAL BASE VENTURA CO) (KNTD)

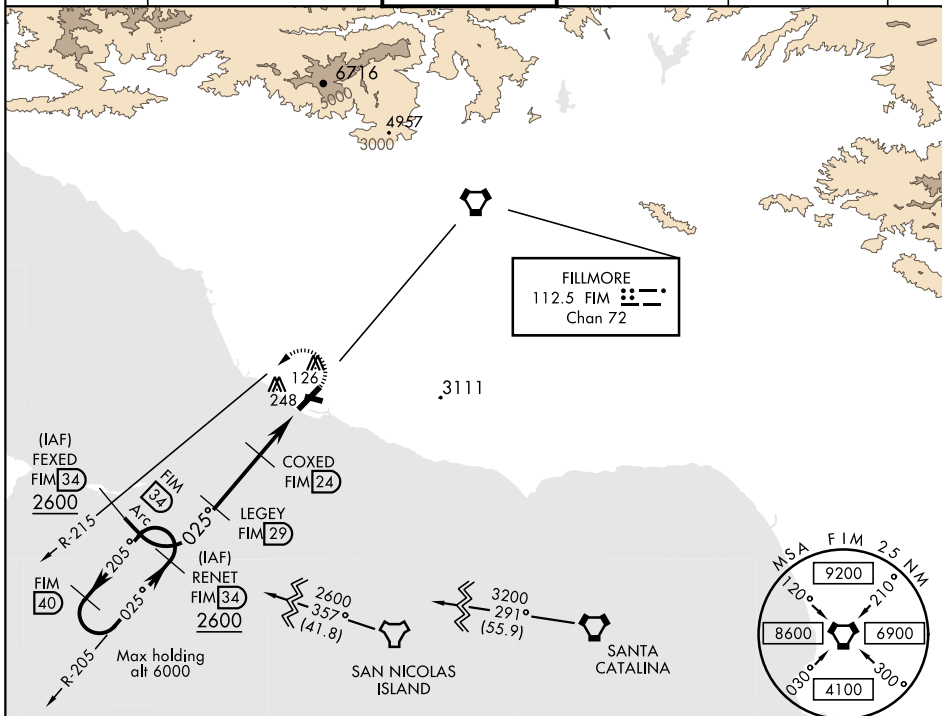
T * When ALS inop, increase CAT AB vis to 1 mile,
CAT CDE to 1 $\frac{3}{8}$ miles.
** Circling not authorized E of Rwy 3-21.

SALSF



MISSED APPROACH: Climbing left turn to 2600.
Intercept the FIM VORTAC R-215, then via FIM R-215
to FEXED, Arc SW of FIM via the 34 DME arc to RENET
and hold.

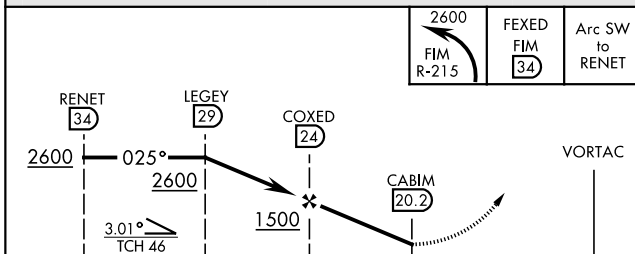
ATIS ★	POINT MUGU APP CON	POINT MUGU TOWER ★	GND CON	CLNC DEL	ASR/ PAR
125.55 363.05	128.65 307.275	124.85 290.375	121.6 360.2	120.75 279.55	



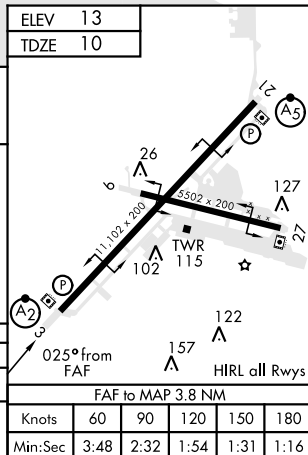
CAUTION: Intmed seq length 5 NM

EMERG SAFE ALT 100 NM 12.100

ELEV	13
TDZE	10



				← 3.8 NM →			
CATEGORY	A		B		C		D
S-3 *	460- $\frac{3}{4}$ 450 (500- $\frac{3}{4}$)				460-1 450 (500-1)		
CIRCLING **	460-1 447 (500-1)		480-1 467 (500-1)		480-1 $\frac{1}{2}$ 467 (500-1 $\frac{1}{2}$)		580-2 567 (600-2) NA



OXNARD, CALIFORNIA

34°07'N-119°07'W

POINT MUGU NAS (NAVAL BASE VENTURA CO) (KNTD)

Amdt 4 27APR17

TACAN Y or VOR/DME RWY 3

SW-3, 03 DEC 2020 to 31 DEC 2020

SW-3, 03 DEC 2020 to 31 DEC 2020