

TACAN NTD
Chan 43

APCH CRS
026°

Rwy ldg 11,102
TDZE 10
Arpt Elev 13

AL-925 [USN]

▼

*When ALS inop, increase CAT AB vis to 1 mile,
CAT CDE vis to 1½ miles.
**Circling not authorized E of Rwy 3-21.

SALSF

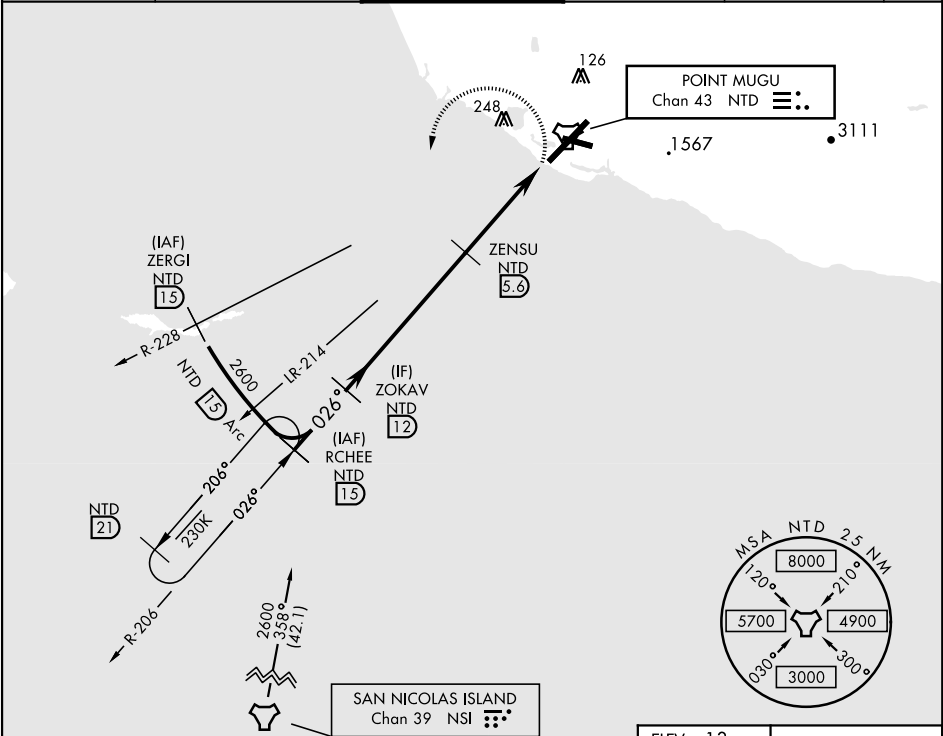
A2

MISSED APPROACH: Climbing left turn to 2600. Intercept
the NTD TACAN R-228, then via NTD R-228 to ZERGI, Arc
SW of NTD via the 15 DME arc to RCHEE and hold.

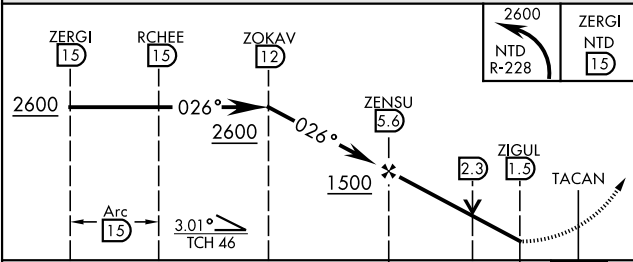
TACAN Z RWY 3

POINT MUGU NAS
(NAVAL BASE VENTURA CO)(KNTD)

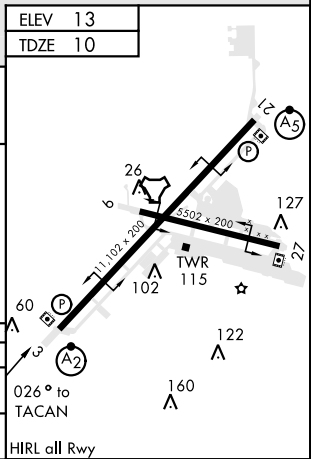
ATIS ★	POINT MUGU APP CON	POINT MUGU TOWER ★	GND CON	CLNC DEL	ASR/ PAR
125.55 363.05	128.65 307.275	124.85 290.375	121.6 360.2	120.75 279.55	



EMERG SAFE ALT 100 NM 12,100



CATEGORY	A	B	C	D	E
S-3 *	460-¾ 450 (500-¾)		460-1 450 (500-1)		
CIRCLING **	460-1 447 (500-1)	480-1 467 (500-1)	480-1½ 467 (500-1½)	580-2 567 (600-2)	NA



SW-3, 03 DEC 2020 to 31 DEC 2020

SW-3, 03 DEC 2020 to 31 DEC 2020