

VOR or TACAN RWY 22L

VORTAC SLI <b>115.7</b> Chan <b>104</b>	APCH CRS <b>214°</b>	Rwy Idg <b>8001</b> TDZE <b>35</b> Arpt Elev <b>35</b>
---	-------------------------	--

AL-953 [USA]

LOS ALAMITOS AAF (KSLI)

\* When ALS inop, increase vis CAT D ¼ mile.  
\*\* Circling not authorized N of Rwy 4L-22R.

SALSF

**MISSED APPROACH:** Climb to 1800, then climbing left turn to 3000 via SLI VORTAC R-058 to AHEIM INT and hold

ATIS ★  
118.875 379.975

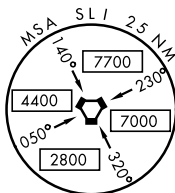
SOCAL APP CON  
125.35 316.125

LOS ALAMITOS TOWER ★  
123.85 251.15

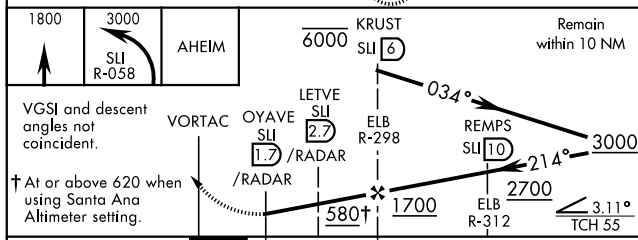
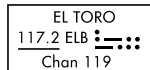
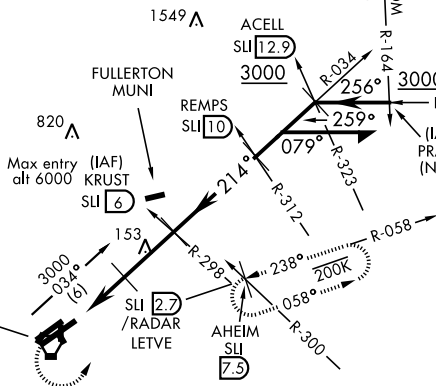
GND CON  
126.95 257.95

ASR/  
PAR

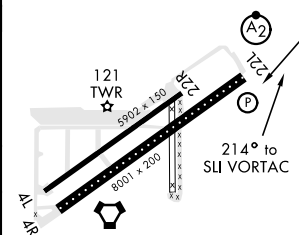
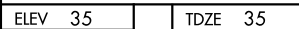
When Los Alamitos altimeter setting not available, use Santa Ana altimeter setting.



Procedure NA for arrivals at PRADO via V16-370 Eastbound.



CATEGORY	A		B		C		D	
S-22L *	440- $\frac{3}{4}$	405 (500- $\frac{3}{4}$ )	440-1 405 (500-1)		440-1 $\frac{1}{4}$ 405 (500-1 $\frac{1}{4}$ )			
CIRCLING **	440-1 405 (500-1)	500-1 465 (500-1)	500-1 $\frac{1}{2}$ 465 (500-1 $\frac{1}{2}$ )		600-2 565 (600-2)			
WITHOUT DME or RADAR								
S-22L	580- $\frac{3}{4}$	545 (600- $\frac{3}{4}$ )	580-1 $\frac{1}{4}$ 545 (600-1 $\frac{1}{4}$ )		580-1 $\frac{1}{2}$ 545 (600-1 $\frac{1}{2}$ )			
CIRCLING **	580-1	545 (600-1)	580-1 $\frac{1}{2}$ 545 (600-1 $\frac{1}{2}$ )		600-2 565 (600-2)			
SANTA ANA ALTIMETER SETTING MINIMUMS								
S-22L *	480- $\frac{3}{4}$	445 (500- $\frac{3}{4}$ )	480-1 445 (500-1)		480-1 $\frac{1}{2}$ 445 (500-1 $\frac{1}{2}$ )			
CIRCLING **	480-1 445 (500-1)	540-1 505 (600-1)	540-1 $\frac{1}{2}$ 505 (600-1 $\frac{1}{2}$ )		640-2 605 (700-2)			
SANTA ANA ALTIMETER SETTING WITHOUT DME or RADAR								
S-22L	620- $\frac{3}{4}$	585 (600- $\frac{3}{4}$ )	620-1 $\frac{1}{4}$ 585 (600-1 $\frac{1}{4}$ )		620-1 $\frac{1}{2}$ 585 (600-1 $\frac{1}{2}$ )			
CIRCLING **	620-1	585 (600-1)	620-1 $\frac{1}{2}$ 585 (600-1 $\frac{1}{2}$ )		640-2 605 (700-2)			



HIRL Rwy 4R-22L  
MIRL Rwy 4L-22R  
REIL Rwy 22L

FAF to MAP 4.3 NM

Knots	60	90	120	150	180
Min:Sec	4:18	2:52	2:09	1:43	1:26

LOS ALAMITOS, CALIFORNIA

33°47'N-118°03'W

LOS ALAMITOS AAF (KSLI)

Amdt 7 20JUL17

VOR or TACAN RWY 22L

SW-3, 03 DEC 2020 to 31 DEC 2020

SW-3 03 DEC 2020 to 31 DEC 2020