

| LOC I-AOD | APP CRS | Rwy Idg | 8L | 8R |
|-----------|---------|----------|-------|-------|
| 109.7 | 078° | | 11200 | 10200 |
| | | TDZE | 944 | 936 |
| | | Apt Elev | 944 | 944 |

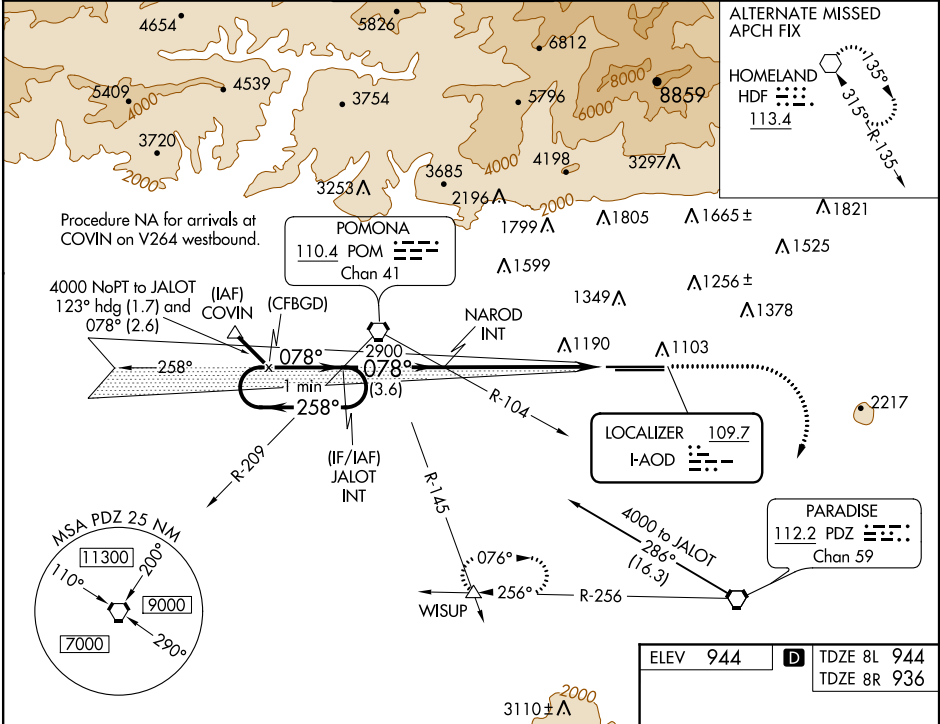
ILS or LOC RWY 8L
ONTARIO INTL (ONT)

⚠ Circling NA north of Rwy 8L-26R.
⚠ * RVR 1800 authorized with the use of FD or AP or HUD to DA.

MALSR Rwy 8L
(A5)

MISSED APPROACH: Climb to 1900 then climbing right turn to 4000 direct PDZ VORTAC then on PDZ R-256 to WISUP INT and hold.

| D-ATIS | SOCAL APP CON | ONTARIO TOWER | GND CON | CLNC DEL | CPDLC |
|--------|---------------|---------------|-------------|----------|-------|
| 124.25 | 127.0 318.2 | 120.6 360.775 | 121.9 257.8 | 118.1 | |



| One Minute Holding Pattern | JALOT INT | NAROD INT | 1900 | 4000 | PDZ | PDZ R-256 | WISUP |
|----------------------------|---------------------|-------------|---------|--------------|--------|-------------|-------|
| 4000 | 258° | 078° | 2900 | 078° | 2900 | | |
| GS 3.00° | | | | | | | |
| TCH 45 | | | | | | | |
| | 3.6 NM | 6 NM | | | | | |
| CATEGORY | A | B | C | D | | | |
| S-ILS 8L* | 1144/24 200 (200-½) | | | | | | |
| S-LOC 8L | 1440/24 | 496 (500-½) | 1440/50 | 496 (500-1) | | | |
| SIDESTEP 8R | 1440-1 | 504 (500-1) | 1440-1½ | 504 (500-1½) | | | |
| CIRCLING | 1440-1 | 496 (500-1) | 1540-1½ | 596 (600-½) | 1600-2 | 656 (700-2) | |

ELEV 944 **D** TDZE 8L 944
TDZE 8R 936

TWR 1024
TWR 1039

12197 X 150
10200 X 150

078° 6 NM from FAF

TDZ/CL Rwy 8L and 26L
HIRL Rwy 8L-26R and 8R-26L

FAF to MAP 6 NM

| | | | | | |
|---------|------|------|------|------|------|
| Knots | 60 | 90 | 120 | 150 | 180 |
| Min:Sec | 6:00 | 4:00 | 3:00 | 2:24 | 2:00 |