

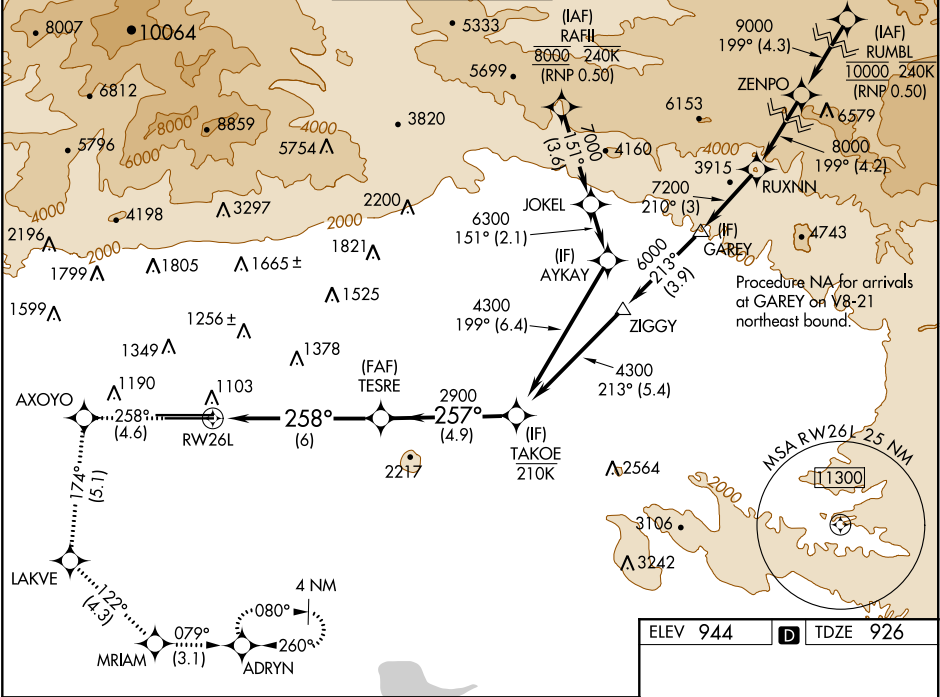
RNP AR APCH.

For uncompensated Baro-VNAV systems, procedure NA below 1°C or above 54°C. For inop ALS, increase RNP 0.15 visibility all Cats to RVR 4500, RNP 0.18 visibility all Cats to RVR 5500, RNP 0.30 visibility all Cats to RVR 6000.

ALSF-2

MISSED APPROACH: Climb to 3400 on track 258° to AXOYO and track 174° to LAKVE and track 122° to MRIAM and track 079° to ADRYN and hold.

D-ATIS 124.25	SOCAL APP CON 127.0 318.2	ONTARIO TOWER 120.6 360.775	GND CON 121.9 257.8	CLNC DEL 118.1	CPDLC
------------------	------------------------------	--------------------------------	------------------------	-------------------	-------



3400	AXOYO	LAKVE	MRIAM	ADRYN	TAKOE
tr 258°	tr 174°	tr 122°	tr 079°		

VGSI and RNAV glidepath not coincident (VGSI Angle 3.00/TCH 74).

See planview for multiple IF locations.

CATEGORY	A	B	C	D
RNP 0.15 DA		1218/24	292 (300-½)	
RNP 0.18 DA		1274/30	348 (400-⅔)	
RNP 0.30 DA		1340/40	414 (400-¾)	

AUTHORIZATION REQUIRED

ELEV 944	TDZE 926
----------	----------

TDZ/CL Rwy 8L and 26L
HIRL Rwy 8L-26R and 8R-26L