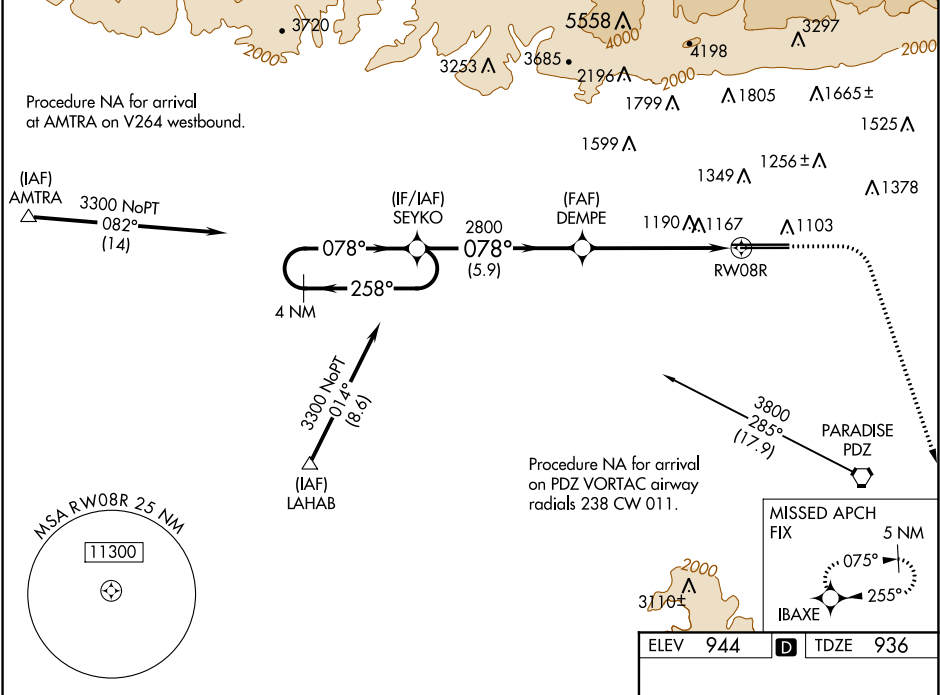


WAAS CH 70329 W08A	APP CRS 078°	Rwy Idg 10200 TDZE 936 Apt Elev 944
--	------------------------	--

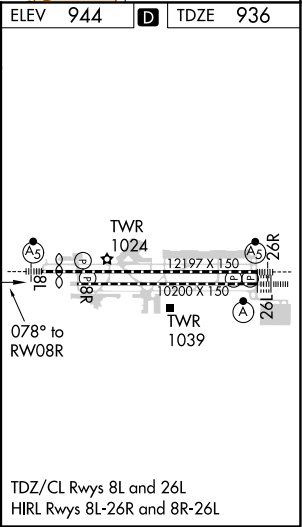
RNAV (GPS) Y RWY 8R
ONTARIO INTL (ONT)

▼ For uncompensated Baro-VNAV systems, procedure NA below 2° C (36°F) or above 54°C (130°F). Circling NA north of Rwy 8L-26R. DME/DME RNP-0.3 NA.	MISSED APPROACH: Climb to 1500 then climbing right turn to 5000 direct IBAXE and hold, continue climb-in-hold to 5000.
--	--

D-ATIS 124.25	SOCAL APP CON 127.0 318.2	ONTARIO TOWER 120.6 360.775	GND CON 121.9 257.8	CLNC DEL 118.1	CPDLC
-------------------------	-------------------------------------	---------------------------------------	-------------------------------	--------------------------	-------



VGSI and RNAV glidepath not coincident (VGSI Angle 3.00/TCH 65)				
4 NM Holding Pattern		SEYKO	DEMPE	IBAXE
3300 ← 258° 078° →		2800	*1.4 NM to RW08R	*LNAV only
GP 3.00° TCH 53		2800	RW08R	
		5.9 NM	4.3 NM	1.4 NM
CATEGORY	A	B	C	D
LPV DA	1220/45 284 (300-7%)			
LNAV/VNAV DA	1494-1 558 (600-1%)			
LNAV MDA	1440/55 504 (500-1)		1440-1 504 (500-1%)	
C CIRCLING	1440-1 496 (500-1)		1540-1 656 (700-2)	



SW-3, 03 DEC 2020 to 31 DEC 2020

SW-3, 03 DEC 2020 to 31 DEC 2020