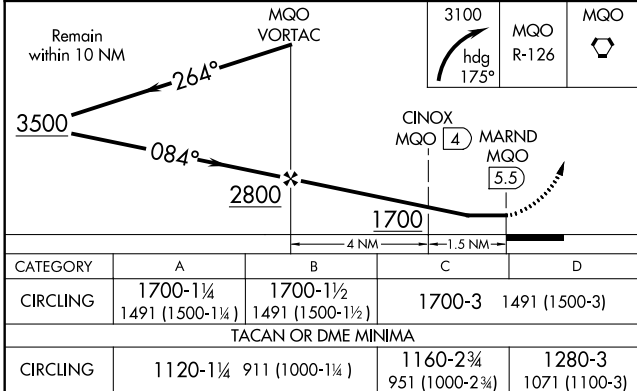
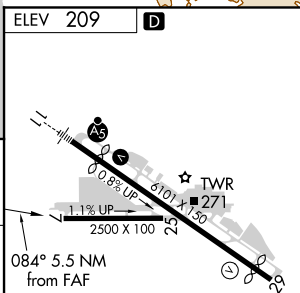


VOR or TACAN-A
SAN LUIS COUNTY RGNL (SBP)

Circling NA north of Rwy 11-29.

MISSED APPROACH: Climbing right turn to 3100 via heading 175° and MQO R-126 to MQO VORTAC and hold. (TACAN Aircraft continue climb to 4000 via MQO R-292 to FRAMS 11.2 DME and hold east, right turns, 292° inbound.)



SAN LUIS COUNTY RGNL (SBP)
VOR or TACAN-A

SW-3, 03 DEC 2020 to 31 DEC 2020