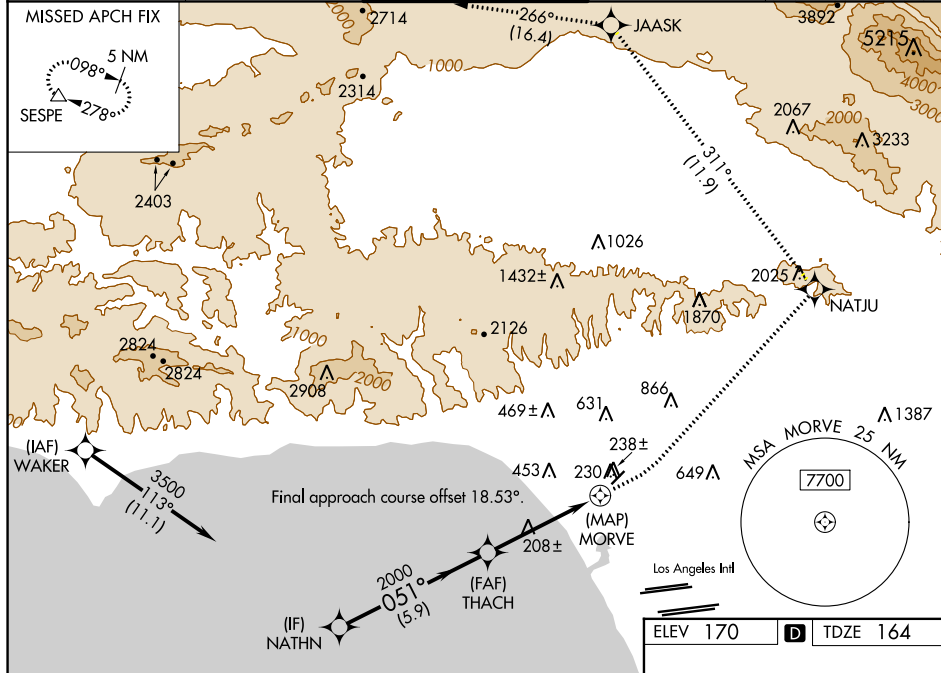


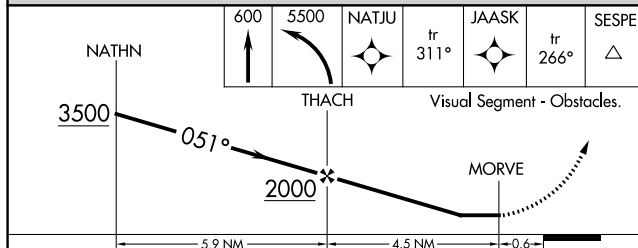
RNAV (GPS) Y RWY 3
SANTA MONICA MUNI (SMO)

MISSED APPROACH: Climb to 600 then climbing left turn to 5500 direct NATJU and track 311° to JAASK and track 266° to SESPE and hold.
***Missed approach requires minimum climb of 300 feet per NM to 2400.**

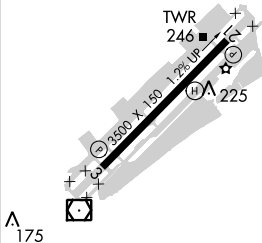
* Missed approach requires minimum climb of 300 feet per NM to 2400.

UNICOM
122.95

ELEV 170	D	TDZE 164
----------	----------	----------



Visual Segment - Obstacles.



CATEGORY	A	B	C	D
LP MDA*	460-1 296 (300-1)			
LP MDA	920-1 756 (800-1)	920-1¼ 756 (800-1¼)	920-2½	756 (800-2½)
INAV MDA*	500-1 336 (400-1)	500-1¼ 336 (400-1¼)	500-2½	336 (400-2½)
INAV MDA	1020-1 856 (900-1)	1020-1¼ 856 (900-1¼)	1020-2½	856 (900-2½)

MIRL Rwy 3-21 **L**
REIL Rwy 21 **L**