

WAAS  
CH **93702**  
**W06A**

APP CRS  
**057°**

Rwy Idg  
TDZE **2351**  
Apt Elev **2351**

**RNAV (GPS) RWY 6**

GENERAL WM J FOX AIRFIELD (WJT')

▼

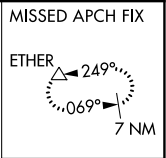
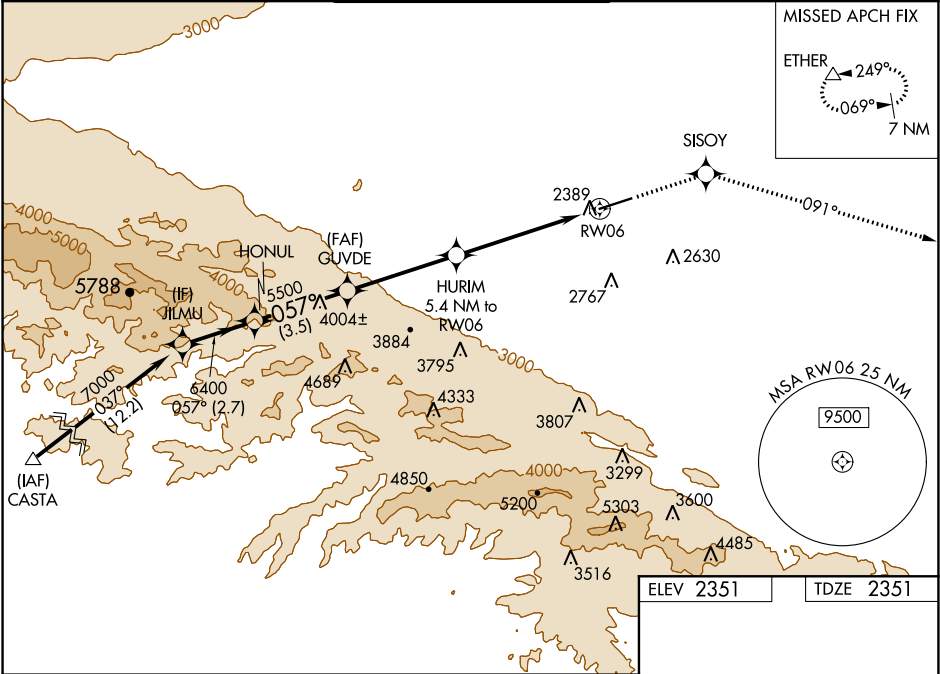
▲

▼▼

When VGSi inop, Straight-in/Circling Rwy 6 procedure NA at night.  
DME/DME RNP-0.3 NA.    Visibility reduction by helicopters NA.  
For uncompensated Baro-VNAV systems, LNAV/VNAV NA below -19°C (-2°F) or above 45°C (113°F).  
If local altimeter setting not received, use Palmdale altimeter setting and increase all DA/MDAs 60 feet.  
Baro-VNAV NA when using Palmdale altimeter setting.

MISSED APPROACH: Climb to 6000 direct SISOY and via 091° track to ETHER and hold.

ATIS <b>126.3</b>	JOSHUA APP CON <b>126.1 290.3</b>	FOX TOWER* <b>118.525 (CTAF) 256.9</b>	GND CON <b>121.7 256.9</b>	UNICOM <b>122.95</b>
----------------------	--------------------------------------	---	-------------------------------	-------------------------



ELEV 2351	TDZE 2351
-----------	-----------

JILMU

HONUL

GUVDE

6000

SISOY

tr 091°

ETHER

7000  
Procedure Turn NA  
GP 3.00°  
TCH 40

057°

6400

5500

\*4100

RW06

\*LNAV only.

HURIM 5.4 NM to RW06

2.7 NM

3.5 NM

4.1 NM

5.4 NM

CATEGORY	A	B	C	D
LPV DA	2601-1 250 (300-1)			
LNAV/VNAV DA	2649-1 298 (300-1)			
LNAV MDA	2940-1 589 (600-1)		2940-1½ 589 (600-1½)	2940-1¾ 589 (600-1¾)
CIRCLING	2940-1 589 (600-1)		2940-1½ 589 (600-1½)	2940-2 589 (600-2)



REIL Rwy 6 and 24  
MIRL Rwy 6-24