

SAN CLEMENTE ISLAND, CALIFORNIA

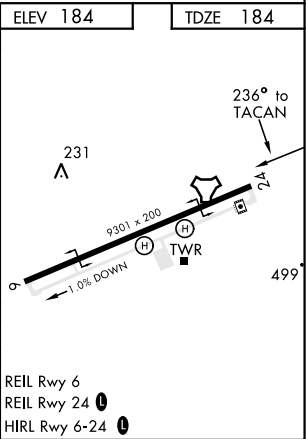
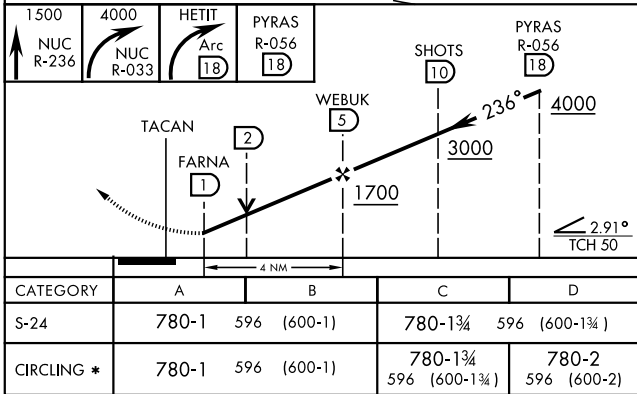
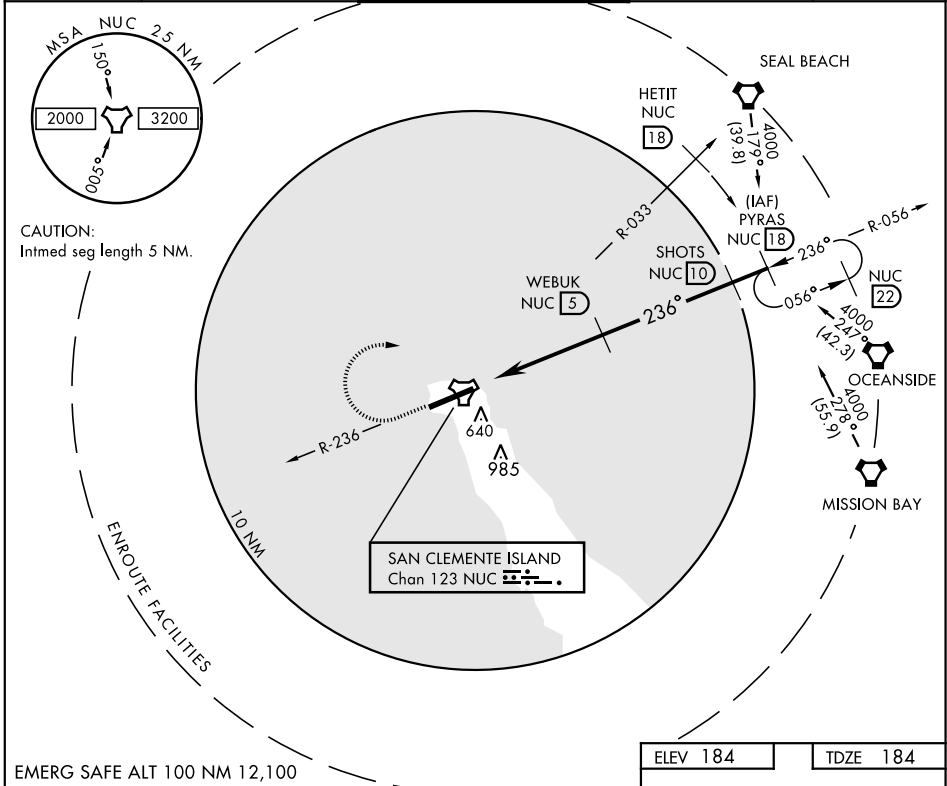
TACAN NUC Chan 123	APCH CRS 236°	Rwy Idg TDZE Arprt Elev	9301 184 184
------------------------------	-------------------------	-------------------------------	---

AL-5126 [USN]

TACAN RWY 24
SAN CLEMENTE ISLAND NALF
(FREDERICK SHERMAN FLD) (KNUC)

⚠ * Circling not authorized S of Rwy 6-24.	MISSED APPROACH: Climb to 1500 via NUC TACAN R-236 then climbing right turn to 4000 via NUC R-033 to HETIT. Then arc NE of NUC TACAN via the 18 DME arc to PYRAS and hold.
---	--

ATIS ★ 268.6	SAN CLEMENTE APP CON 127.05 292.15	SAN CLEMENTE ISLAND TOWER ★ 126.75 278.8	GND CON 0 119.55 251.05	ASR/PAR
------------------------	--	--	-----------------------------------	---------



TACAN RWY 24