

| | | |
|---------------------------|-------------------------|---|
| LOC I-NSI 109.7 | APCH CRS 301° | Rwy Idg TDZE Arpt Elev 10,002 506 506 |
|---------------------------|-------------------------|---|

AL-5162 [USN]

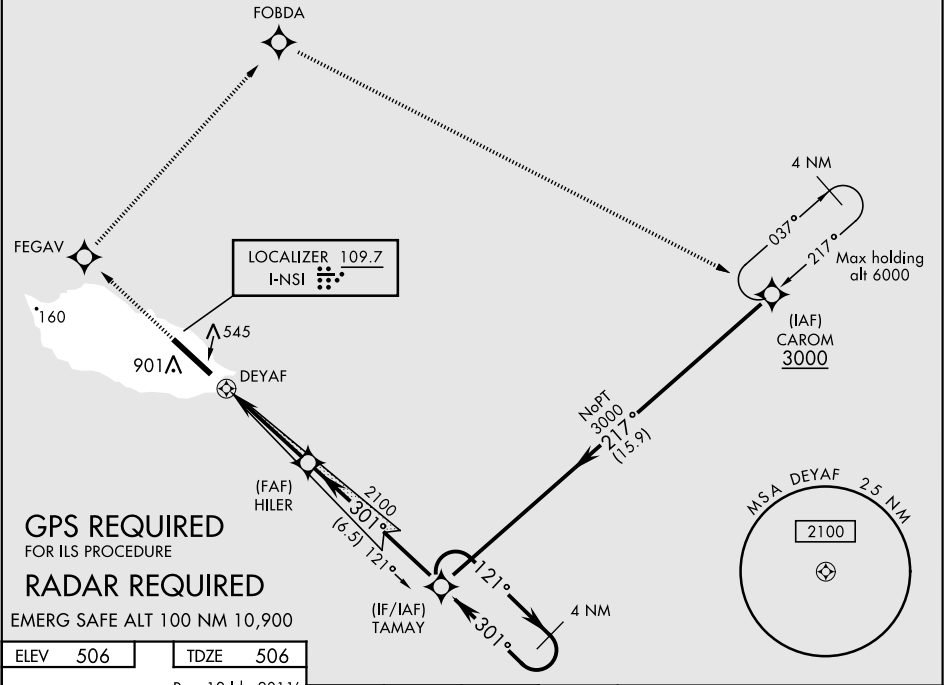
SAN NICOLAS ISLAND NOLF (KNSI)

ILS Z or RNAV (GPS) RWY 30

| | |
|--|--|
| ✈ * Circling not authorized W of Rwy 12-30. | † MISSED APPROACH: Climb to 3000 direct FEGAV, track 030° to FOBDA, track 105° to CAROM and hold. |
|--|--|

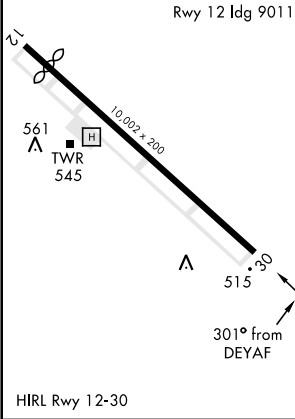
SAN NICOLAS TOWER ★
126.85 379.3

† All acft are restricted to 250 KIAS or less until FEGAV during the missed approach procedure.



GPS REQUIRED
FOR ILS PROCEDURE
RADAR REQUIRED
EMERG SAFE ALT 100 NM 10,900

| | |
|----------|----------|
| ELEV 506 | TDZE 506 |
|----------|----------|



| | | | | | |
|---|----------------------|----------------------|------------------------|---------|--------------------|
| 3000 ↑ | FEGAV ✧ | tr 030° ↻ | FOBDA ✧ | | |
| <p>DEYAF 0.9 4 NM HILER 2100 TAMAY 3000 121° 301° GS 3.00° TCH 56</p> | | | | | |
| CATEGORY | A | B | C | D | E |
| S-ILS 30 | 706-¾ | | 200 | (200-¾) | |
| LNAV MDA | 920-1 414 (500-1) | | 920-1½ 414 (500-1½) | | |
| CIRCLING * | 920-1 414 (500-1) | 960-1 454 (500-1) | 960-1½ 454 (500-1½) | | 1060-2 554 (600-2) |

ILS Z or RNAV (GPS) RWY 30

SW-3, 03 DEC 2020 to 31 DEC 2020

SW-3, 03 DEC 2020 to 31 DEC 2020