

WAAS CH 45934 W06A	APP CRS 054°	Rwy Idg TDZE Apt Elev	3757 1430 1444
--	------------------------	-----------------------------	---

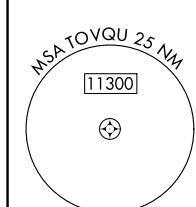
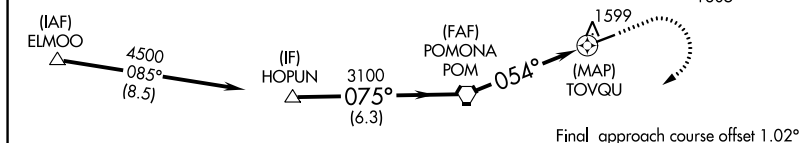
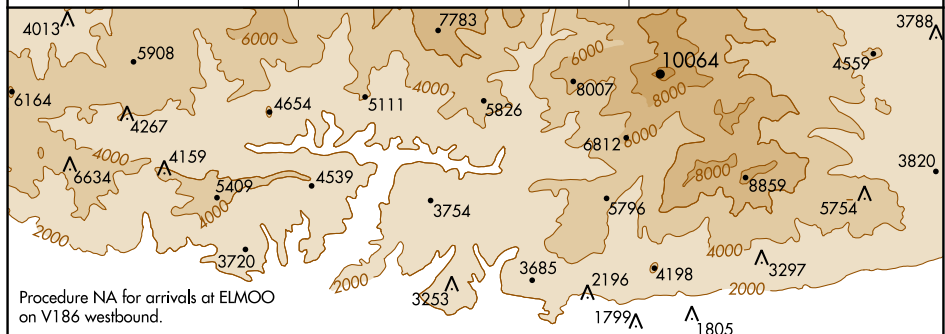
RNAV (GPS) RWY 6
CABLE (CCB)

RNP APCH.

T Circling NA northwest of Rwy 6-24. Rwy 6 helicopter visibility reduction below $\frac{3}{4}$ SM NA. Circling Rwy 24 NA at night. When local altimeter setting not received, use Ontario altimeter setting and increase all MDA 100 feet.

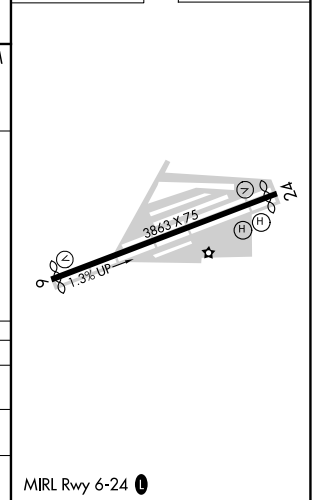
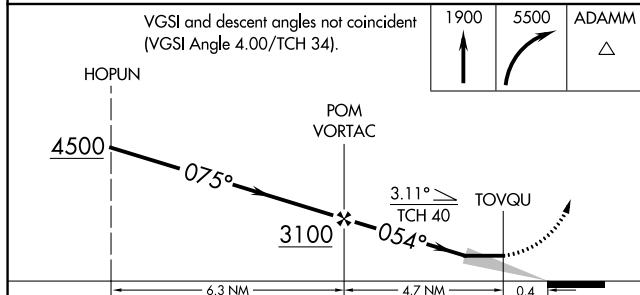
MISSED APPROACH: Climb to 1900 then climbing right turn to 5500 direct ADAMM and hold, continue climb-in-hold to 5500.


AWOS-3P 119.525	SOCAL APP CON 125.5 349.0	UNICOM 123.0 (CTAF) 0
---------------------------	-------------------------------------	---------------------------------



ELEV 1444		TDZE 1430
-----------	--	-----------

VGSI and descent angles not coincident
(VGSI Angle 4.00/TCH 34)



CATEGORY	A	B	C	D
LP MDA	1780-1	350 (400-1)	1780-1 $\frac{1}{8}$ 350 (400-1 $\frac{1}{8}$)	NA
LNAV MDA	1940-1	510 (500-1)	1940-1 $\frac{5}{8}$ 510 (500-1 $\frac{5}{8}$)	NA
 CIRCLING	2020-1	576 (600-1)	2140-2 696 (700-2)	NA

MIRL Rwy 6-24 **L**