

LOC I-POC	APP CRS	Rwy Idg	4151
110.5	259°	TDZE	1005
		Apt Elev	1014

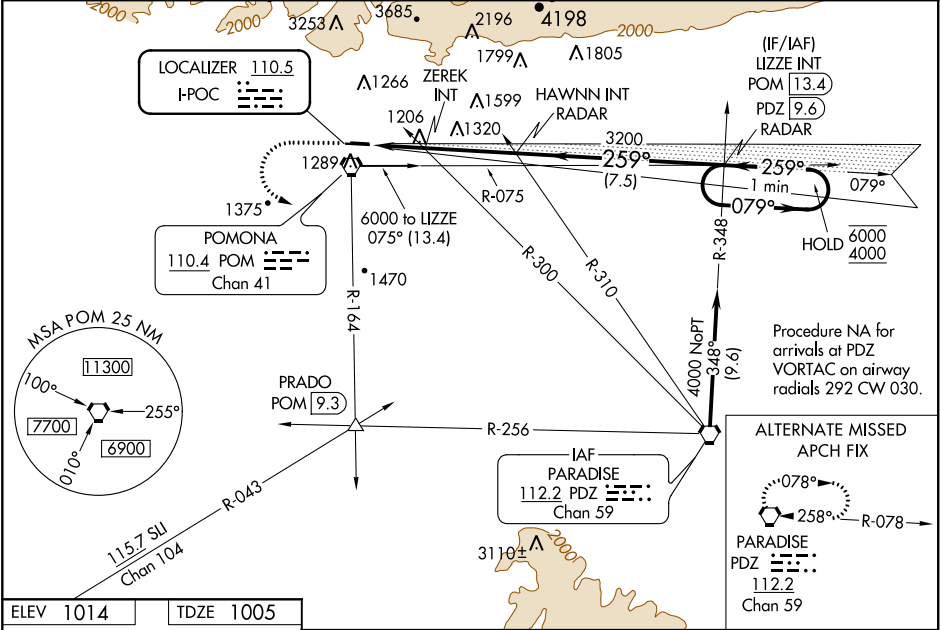
LOC RWY 26L
BRACKETT FIELD (POC)

⚠ Circling to Rwy 8L NA at night. Circling NA for Cat C north of Rwy 8L-26R.

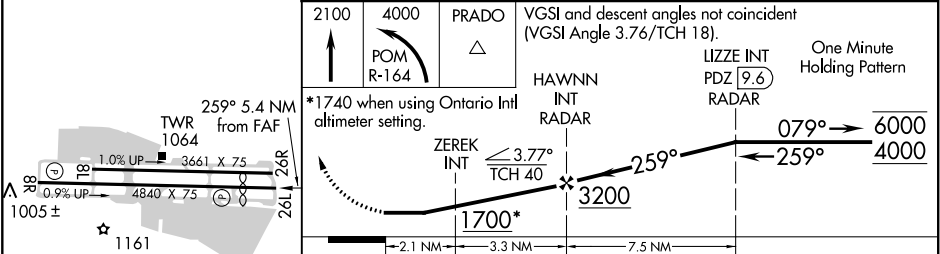
⚠ When Circling to Rwy 8R at night, operational VGSi required, remain on or above VGSi glidepath until threshold. Rwy 26L helicopter visibility reduction below ¾ SM NA. When local altimeter setting not received, use Ontario Intl altimeter setting and increase all MDAs 40 feet.

MISSED APPROACH: Climb to 2100 then climbing left turn to 4000 on POM VORTAC R-164 to PRADO INT/POM 9.3 DME and hold.

ATIS	SOCAL APP CON	BRACKETT TOWER★	GND CON	CLNC DEL	UNICOM
124.4	125.5 318.2	RWY 8R/26L 118.2 (CTAF)	125.0	121.875	122.95
		RWY 8L/26R 133.3			



ELEV 1014	TDZE 1005
-----------	-----------



CATEGORY		A	B	C	D
S-LOC 26L		1700-1	695 (700-1)	1700-2 695 (700-2)	NA
CIRCLING		1700-1	686 (700-1)	1760-2¼ 746 (800-2¼)	NA
ZEREK MINIMUMS (DUAL VOR RECEIVERS REQUIRED)					
S-LOC 26L		1460-1	455 (500-1)	1460-1¾ 455 (500-1¾)	NA
CIRCLING		1680-1	666 (700-1)	1760-2¼ 746 (800-2¼)	NA