

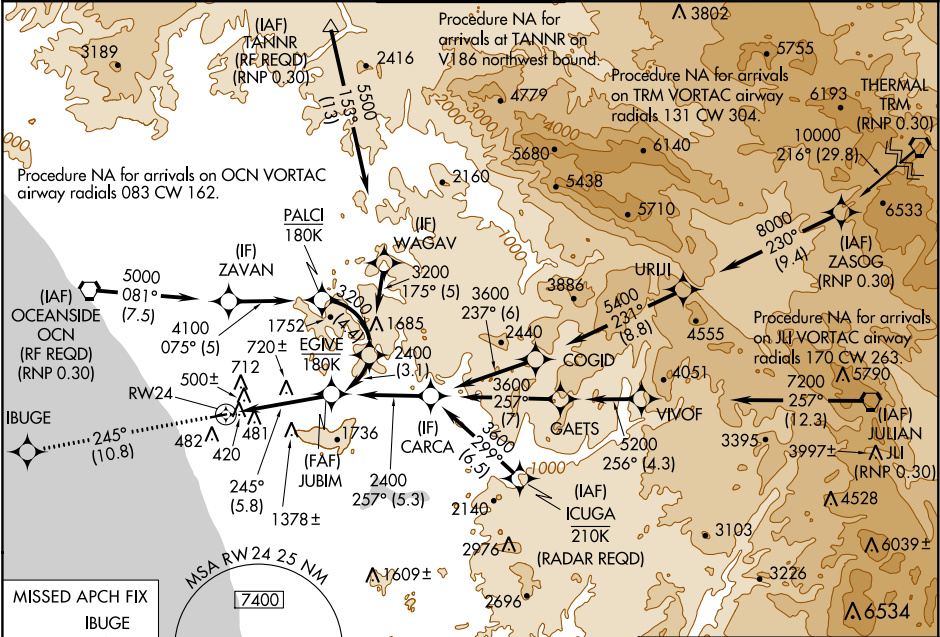
APP CRS	Rwy Idg	4897
245°	TDZE	326
	Apt Elev	331

RNAV (RNP) Z RWY 24

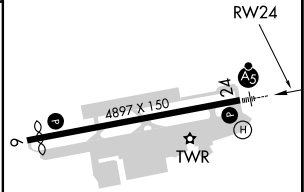
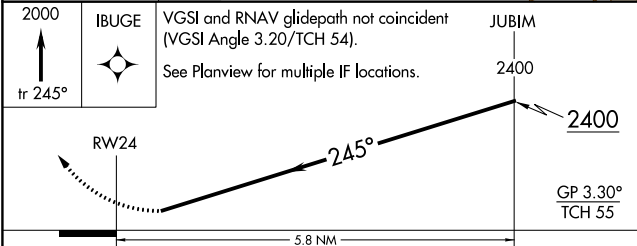
MC CLELLAN-PALOMAR (CRQ)

<p>T For uncompensated Baro-VNAV systems, procedure NA below 1°C (34°F) or above 54°C (130°F). For inoperative MALSR, increase RNP 0.10 visibility to RVR 6000 all Cats, RNP 0.30 visibility to 1% all Cats. GPS required.</p>	<p>MALSR</p>	<p>MISSED APPROACH: Climb to 2000 on track 245° to IBUGE and hold.</p>
---	---------------------	---

ATIS 120.15	SOCAL APP CON 127.3 323.0	PALOMAR TOWER* 118.6 (CTAF) 0 276.4	GND CON 121.8	CLNC DEL 134.85
------------------------------	--	--	--------------------------------	----------------------------------

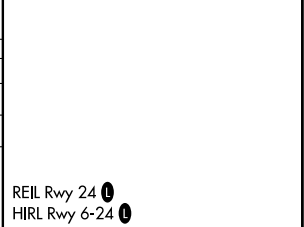


ELEV 331	D	TDZE 326
-----------------	----------	-----------------



CATEGORY	A	B	C	D
RNP 0.10 DA	810/50	484 (500-1)		NA
RNP 0.30 DA	931-1 $\frac{3}{8}$	605 (600-1 $\frac{3}{8}$)		NA

AUTHORIZATION REQUIRED



SW-3, 03 DEC 2020 to 31 DEC 2020

SW-3, 03 DEC 2020 to 31 DEC 2020