

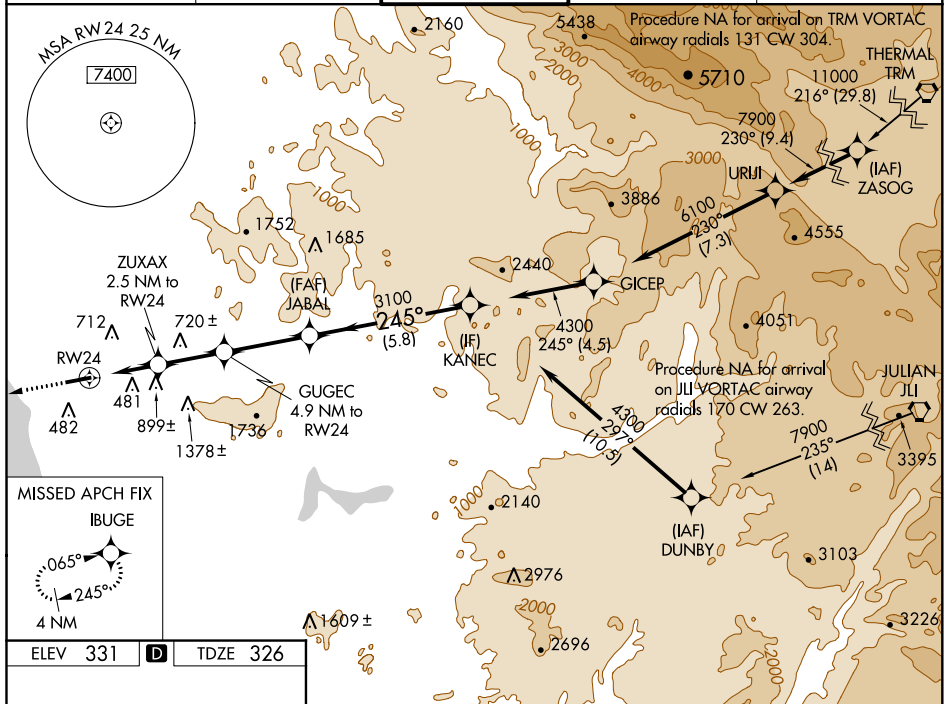
19115

RNAV (GPS) Y RWY 24
MC CLELLAN-PALOMAR (CRQ)

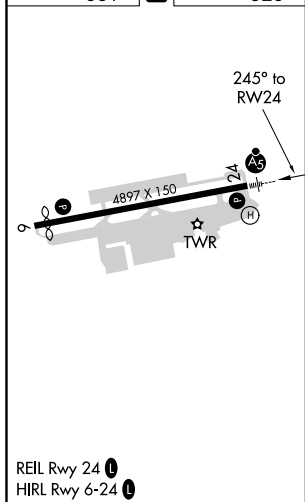
MALSR

MISSED APPROACH:
Climb to 2000 direct
IBUGE and hold.

ATIS 120.15	SOCAL APP CON 127.3 323.0	PALOMAR TOWER ★ 118.6 (CTAF) 0 276.4	GND CON 121.8	CLNC DEL 134.85
----------------	------------------------------	---	------------------	--------------------



ELEV 331	D	TDZE 326
----------	----------	----------



MC CLELLAN-PALOMAR (CRQ)
RNAV (GPS) Y RWY 24