

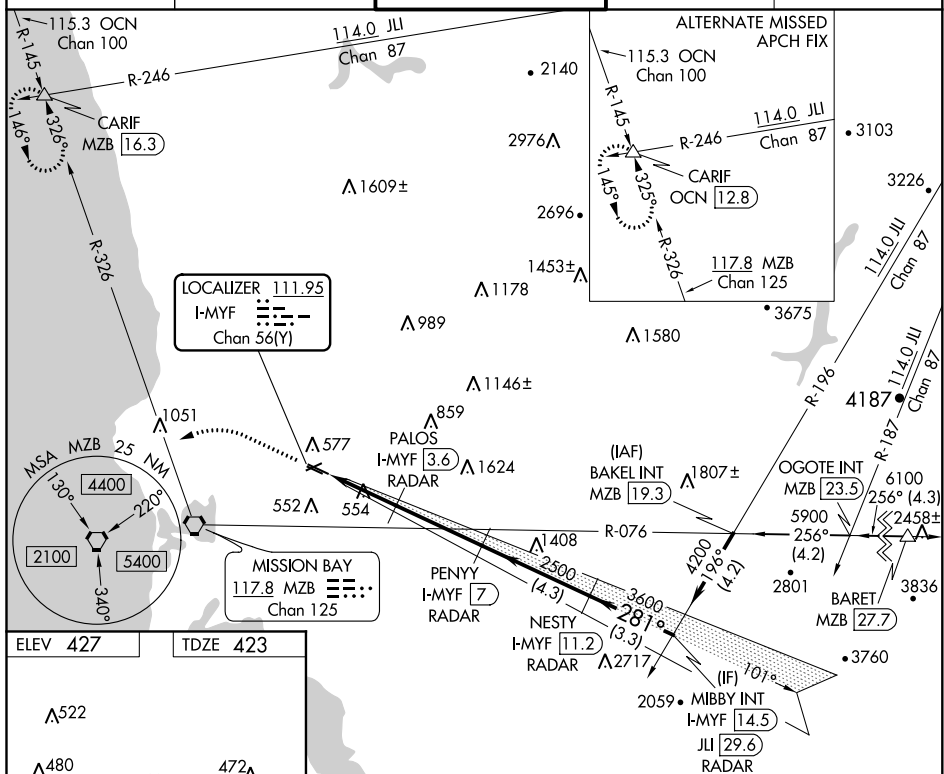
ILS or LOC RWY 28R
MONTGOMERY-GIBBS EXECUTIVE (MYF)

MALSR
A5

MISSED APPROACH: Climb to 1100 then climbing left turn to 3000 on heading 270° and MZB VORTAC R-326 to CARIF INT/MZB 16.3 DME and hold.

Rwy 28R helicopter visibility reduction below $\frac{3}{4}$ SM NA.

ATIS 126.9	SOCAL APP CON 124.35 279.625	MONTGOMERY TOWER ★ 119.2 (CTAF) 0 269.4	GND CON 118.225	CLNC DEL 123.725
---------------	---------------------------------	--	--------------------	---------------------



REIL Rwy 28L
MRL Rwy 10L-28R

FAF to MAP 6.3 NM					
Knots	60	90	120	150	180
Min:Sec	6:18	4:12	3:09	2:31	2:06

CATEGORY	A	B	C	D
S-ILS 28R	673- $\frac{3}{4}$	250 (300- $\frac{3}{4}$)		NA
S-LOC 28R	820- $\frac{3}{4}$	397 (400- $\frac{3}{4}$)		NA
CIRCLING	920-1	493 (500-1)		NA

SW-3, 03 DEC 2020 to 31 DEC 2020