

(PADRZ2.PADRZ) 17341

PADRZ TWO DEPARTURE (RNAV)

MONTGOMERY-GIBBS EXECUTIVE (MYF)  
AL-5401 (FAA)  
SAN DIEGO, CALIFORNIA

ATIS  
126.9  
MONTGOMERY TOWER \*  
119.2 269.4  
SOCAL DEP CON  
119.6 363.1

TOP ALTITUDE:  
15000

DEPARTURE ROUTE DESCRIPTION

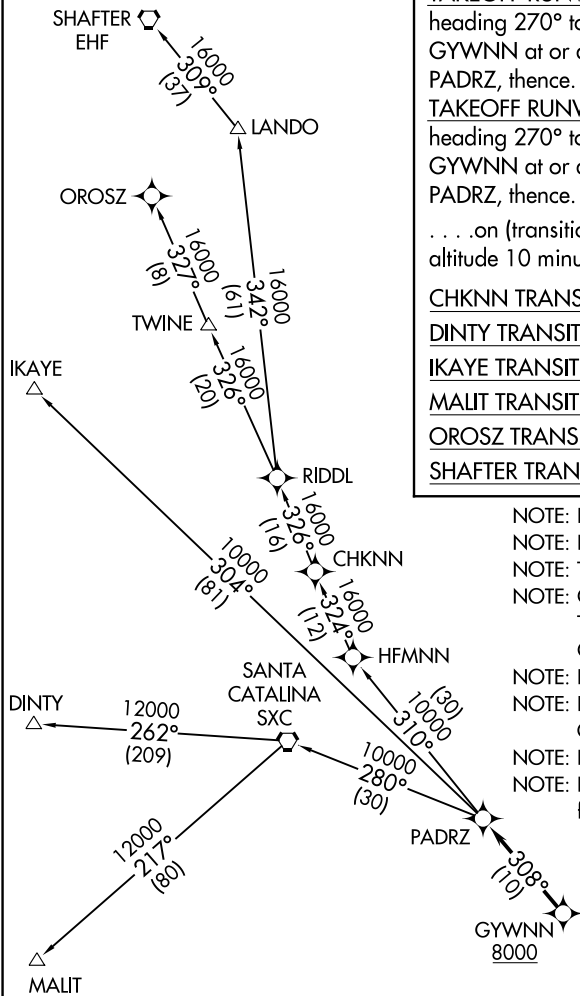
TAKEOFF RUNWAYS 10L/10R: Climbing right turn heading 270° to 2000, expect vectors to cross GYWNN at or above 8000, then on track 308° to PADRZ, thence. . . .

TAKEOFF RUNWAY 23: Climbing right turn heading 270° to 2000, expect vectors to cross GYWNN at or above 8000, then on track 308° to PADRZ, thence. . . .

TAKEOFF RUNWAYS 28L/28R: Climbing left turn heading 270° to 2000, expect vectors to cross GYWNN at or above 8000, then on track 308° to PADRZ, thence. . . .

. . . on (transition). Maintain 15000. Expect higher altitude 10 minutes after departure.

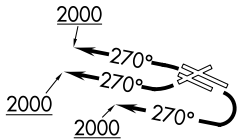
CHKNN TRANSITION (PADRZ2.CHKNN)  
DINTY TRANSITION (PADRZ2.DINTY)  
IKAYE TRANSITION (PADRZ2.IKAYE)  
MALIT TRANSITION (PADRZ2.MALIT)  
OROSZ TRANSITION (PADRZ2.ORSZ)  
SHAFTER TRANSITION (PADRZ2.EHF)



TAKEOFF MINIMUMS  
Rwy 5: NA-ATC.  
Rwys 10L/10R, 23, 28L/R: Standard.

NOTE: Chart not to scale.

NOTE: RNAV 1.  
NOTE: RADAR required.  
NOTE: Turbojets and turboprops only.  
NOTE: CHKNN, SHAFTER, IKAYE, OROSZ TRANSITIONS: DME/DME/IRU or GPS required.  
NOTE: DINTY, MALIT TRANSITIONS: GPS only.  
NOTE: For non-GPS equipped aircraft, Oceanside (OCN) must be operational.  
NOTE: DINTY TRANSITION ATC assigned only.  
NOTE: DINTY and MALIT TRANSITIONS NA from SEE, SDM and RNM airports.



PADRZ TWO DEPARTURE (RNAV)

(PADRZ2.PADRZ) 07DEC17

SAN DIEGO, CALIFORNIA  
MONTGOMERY-GIBBS EXECUTIVE (MYF)

SW-3, 03 DEC 2020 to 31 DEC 2020

SW-3, 03 DEC 2020 to 31 DEC 2020