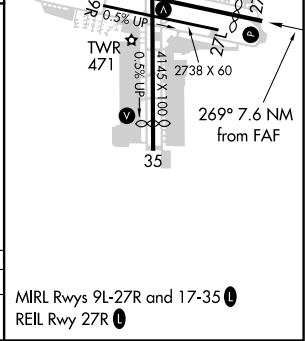
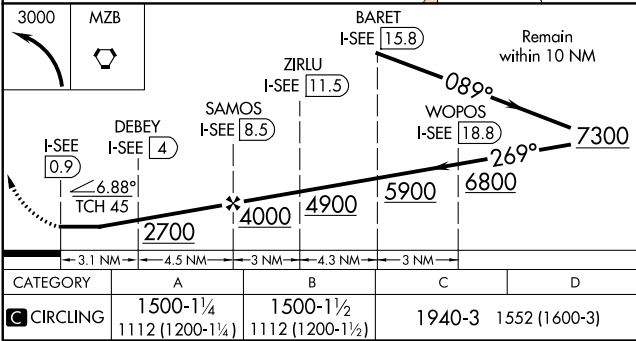
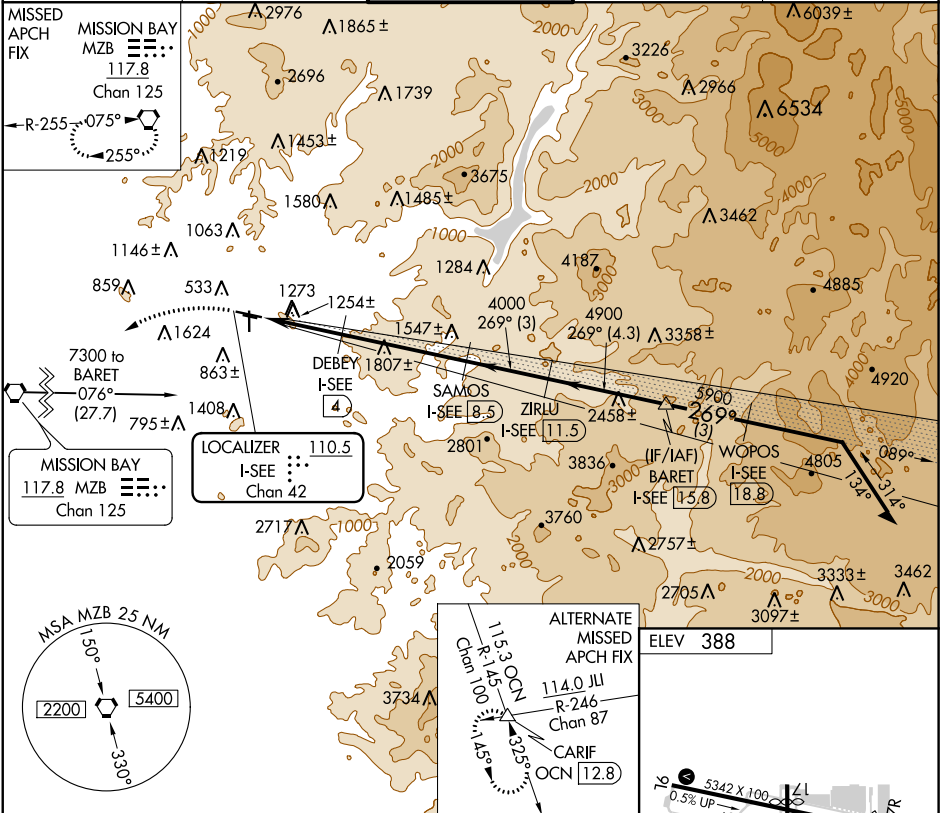


LOC/DME I-SEE 110.5 Chan 42	APP CRS 269°	Rwy Idg TDZE Apt Elev N/A N/A 388
---	------------------------	---

LOC-D
GILLESPIE FIELD (SE/E)

DME required.	MISSED APPROACH: Climbing left turn to 3000 direct to MZB VORTAC and hold.
---------------	--

ATIS 125.45	SOCAL APP CON 124.35 279.625	GILLESPIE TOWER* 120.7 (CTAF) 257.8	GND CON 121.7	CLNC DEL 125.1
-----------------------	--	---	-------------------------	--------------------------



SW-3, 03 DEC 2020 to 31 DEC 2020

SW-3, 03 DEC 2020 to 31 DEC 2020