

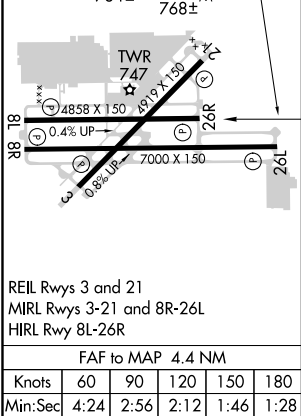
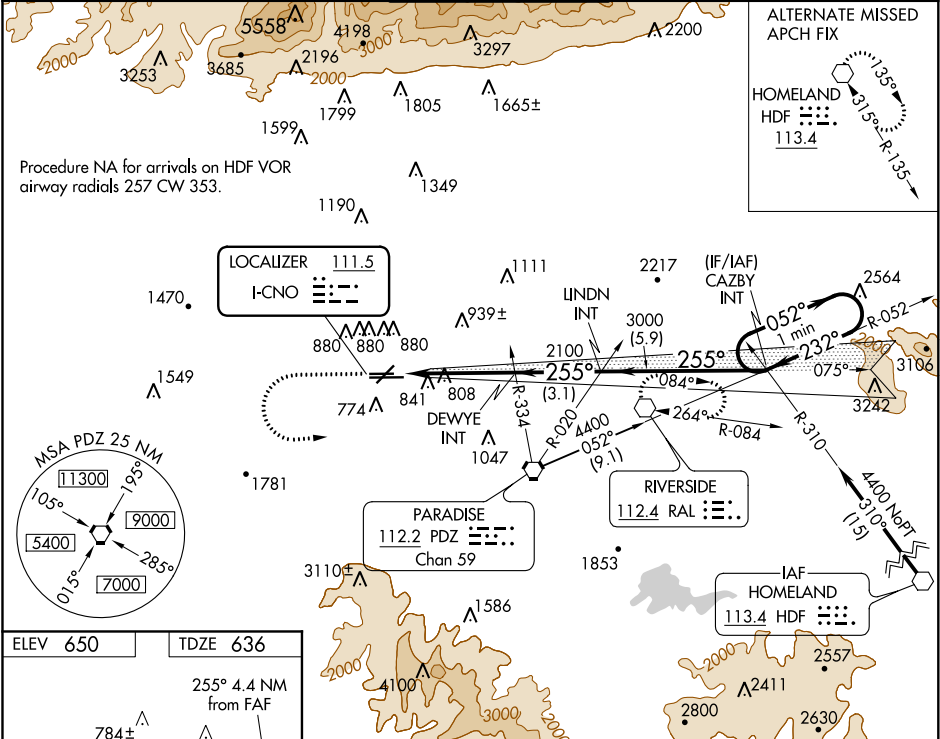
LOC I-CNO	APP CRS	Rwy Idg	4858
111.5	255°	TDZE	636
		Apt Elev	650

ILS or LOC RWY 26R
CHINO (CNO)

⚠ Helicopter visibility reduction below ¾ SM NA.
⚠ When local altimeter setting not received, use Ontario altimeter setting and increase all DA 54 feet and all MDA 60 feet, increase S-ILS 26R all Cats, S-LOC 26R Cat D and Circling Cat C visibility ¼ mile.

MISSED APPROACH: Climb to 1100 then climbing left turn to 4500 direct RAL VOR and hold, continue climb-in-hold to 4500.

ATIS 125.85	SOCAL APP CON 135.4 318.2	CHINO TOWER ★ 118.5 (CTAF)	GND CON 121.6	UNICOM 122.95
----------------	------------------------------	-------------------------------	------------------	------------------



	1100	4500	RAL				
				DEWEY INT	LUNDN INT	CAZBY INT	One Minute Holding Pattern
				2100	3000	255°	052°
				2100	2100	232°	4400
				4.4 NM	3.1 NM	5.9 NM	GS 3.00° TCH 51
CATEGORY	A	B	C	D			
S-ILS 26R		886-¾	250 (300-¾)				
S-LOC 26R	1060-1	424 (500-1)	1060-1¼	424 (500-1¼)			
CIRCLING	1180-1	530 (600-1)	1240-1½	590 (600-1½)	1240-2	590 (600-2)	

SW-3, 03 DEC 2020 to 31 DEC 2020

SW-3, 03 DEC 2020 to 31 DEC 2020