

VOR RAL
112.4

APP CRS
264°

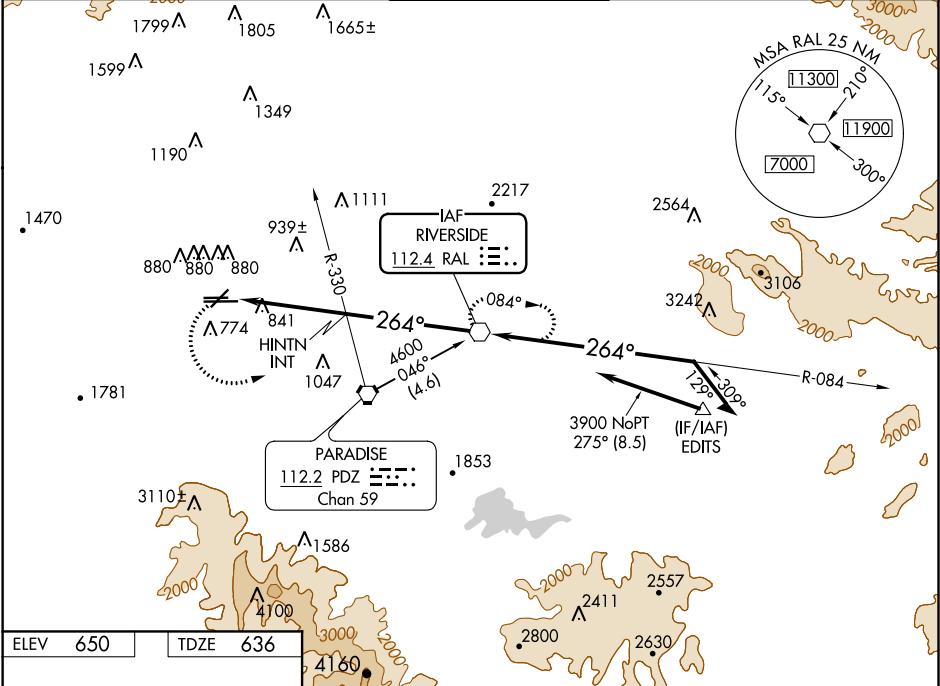
Rwy Idg
TDZE
Apt Elev
4858
636
650

VOR RWY 26R
CHINO (CNO)

Visibility reduction by helicopters NA.
When local altimeter setting not received, use Riverside Muni altimeter setting and increase all MDA 60 feet, increase HINTN FIX minimums S-26R and circling Cat B, C, and D visibility ½ mile.

MISSED APPROACH: Climbing left turn to 4500 direct RAL VOR and hold, continue climb-in-hold to 4500.

ATIS 125.85	SOCAL APP CON 135.4 318.2	CHINO TOWER ★ 118.5 (CTAF)	GND CON 121.6	UNICOM 122.95
-----------------------	-------------------------------------	--------------------------------------	-------------------------	-------------------------



ELEV 650 TDZE 636

4500 RAL

VGSI and descent angles not coincident (VGSI Angle 3.00/TCH 53).

RAL VOR

Remain within 10 NM

HINTN INT

2140*

3900

084°

264°

4600

*2200 when using Riverside Muni altimeter setting.

CATEGORY	A	B	C	D
S-26R	2140-1¼ 1504 (1500-1¼)	2140-1½ 1504 (1500-1½)	2140-3	1504 (1500-3)
CIRCLING	2140-1¼ 1490 (1500-1¼)	2140-1½ 1490 (1500-1½)	2140-3	1490 (1500-3)
HINTN FIX MINIMUMS				
S-26R	1320-1	684 (700-1)	1320-2 684 (700-2)	1320-2¼ 684 (700-2¼)
CIRCLING	1320-1	670 (700-1)	1320-2 670 (700-2)	1320-2¼ 670 (700-2¼)