

APP CRS  
**096°**

Rwy Idg  
TDZE  
Apt Elev  
**N/A**  
**N/A**  
**296**

**RNAV (GPS)-B**  
SAN GABRIEL VALLEY (EMT)

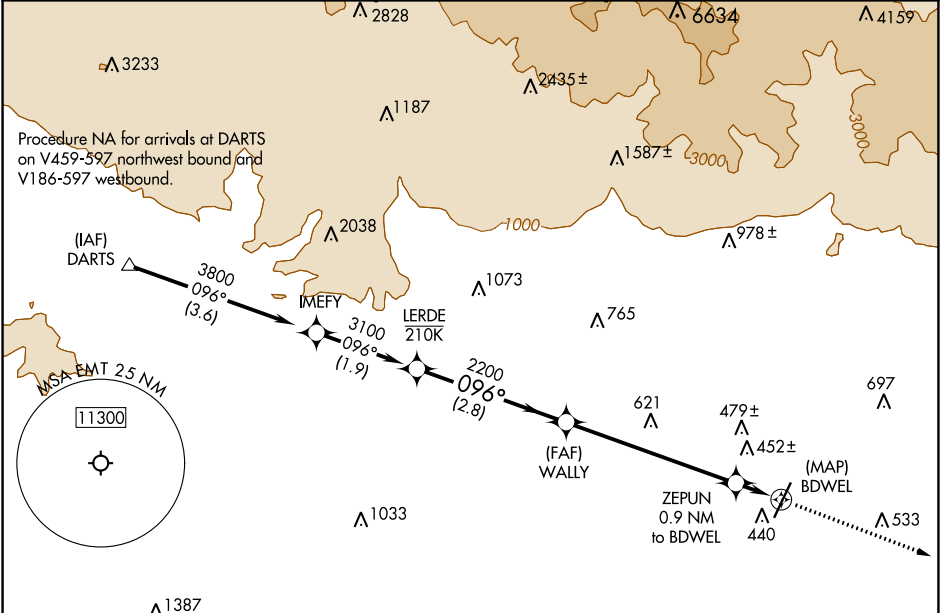
RNP APCH.

NA

Circling Rwy 1 NA at night.

MISSED APPROACH: Climb to 4000  
direct ADAMM and on track 098°  
to PDZ VORTAC and hold.

ATIS <b>118.75</b>	SOCAL APP CON <b>125.5 318.2</b>	EL MONTE TOWER * <b>121.2 (CTAF)</b> <b>0</b>	GND CON <b>125.9</b>	UNICOM <b>122.95</b>
-----------------------	-------------------------------------	--	-------------------------	-------------------------



ELEV 296 **D**

MISSED APCH FIX

LERDE 3100

WALLY 2200

ZEPUN 0.9 NM to BDWEL

BDWEL

CATEGORY	A	B	C	D
<b>CIRCLING</b>	800-1 504 (600-1)	960-1 664 (700-1)	1140-2½ 844 (900-2½)	1140-2¾ 844 (900-2¾)