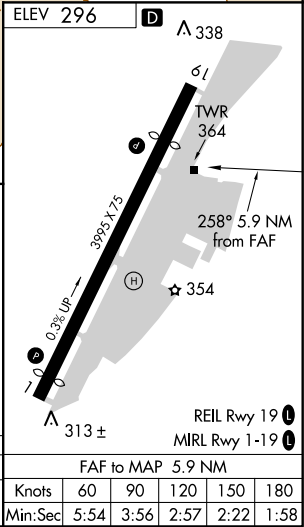
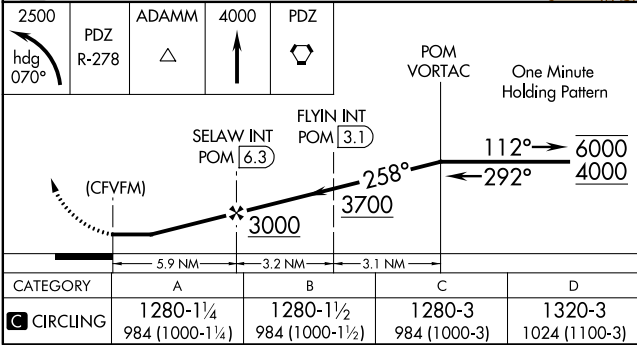
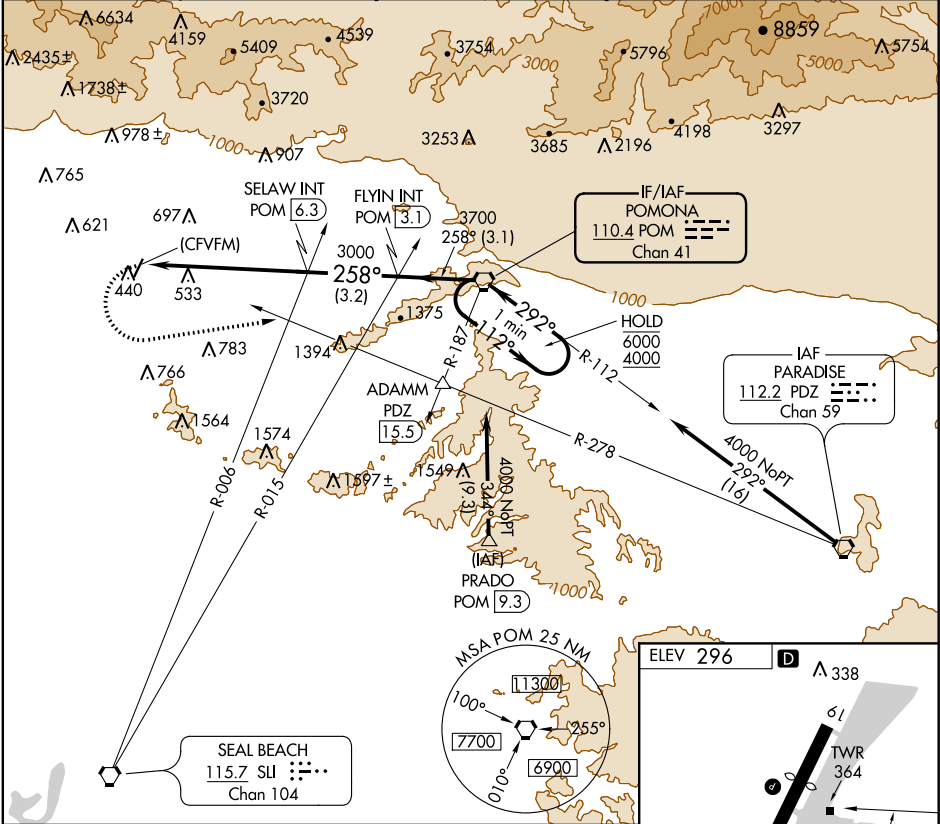


VORTAC POM <b>110.4</b> Chan 41	APP CRS <b>258°</b>	Rwy Idg TDZE Apt Elev <b>N/A</b> <b>N/A</b> <b>296</b>
---------------------------------------	------------------------	---

VOR-A  
SAN GABRIEL VALLEY (EMT)

<p><b>V</b> Circling Rwy 1 NA at night. When local altimeter setting not received, use Ontario Int'l altimeter setting and increase all MDA 160 feet.</p>	<p><b>MISSED APPROACH:</b> Climbing left turn to 2500 on heading 070° and PDZ VORTAC R-278 to ADAMM INT/PDZ 15.5 DME then continue climb to 4000 to PDZ VORTAC.</p>
---	---

ATIS <b>118.75</b>	SOCAL APP CON <b>125.5 318.2</b>	EL MONTE TOWER ★ <b>121.2 (CTAF) 0</b>	GND CON <b>125.9</b>	UNICOM <b>122.95</b>
-----------------------	-------------------------------------	---	-------------------------	-------------------------



EL MONTE, CALIFORNIA Orig-A 28MAR19	34°05'N-118°02'W	SAN GABRIEL VALLEY (EMT) <b>VOR-A</b>
--	------------------	--