

APP CRS
247°

Rwy Idg
2712

TDZE
28

Apt Elev
28

GPS RWY 24

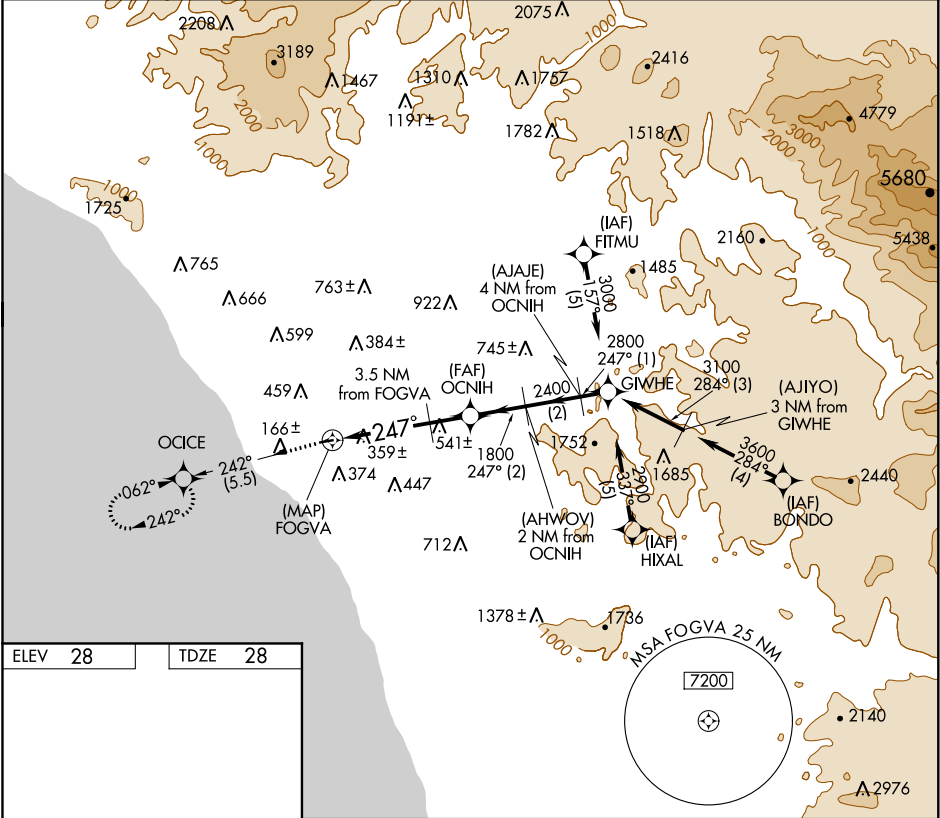
BOB MAXWELL MEMORIAL AIRFIELD (OKB)

NA

Night Landing: Rwy 6 NA.

MISSED APPROACH: Climb to 2000 via 242° course to OCICE WP and hold.

ASOS 127.8	SOCAL APP CON 127.3 323.0	UNICOM 122.725 (CTAF) 0
---------------	------------------------------	----------------------------



ELEV 28

TDZE 28

2000

OCICE

242° crs

FOGVA

2712 X 75

247° to FOGVA

FOGVA

OCNH

GIMHE

2400

2800

2900

Procedure Turn NA

3.5 NM from FOGVA

1.5 NM

2 NM

2 NM

1 NM

CATEGORY	A	B	C	D
S-24	740-1 712 (800-1)		NA	
CIRCLING	880-1 852 (900-1)	880-1½ 852 (900-1½)	NA	