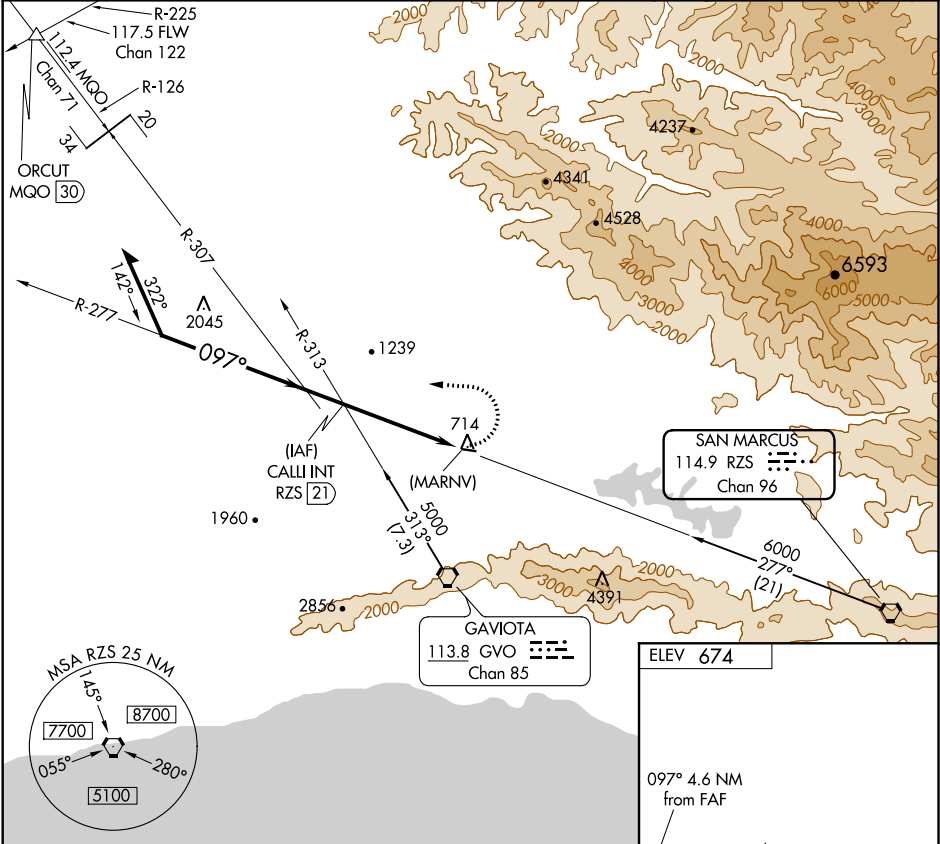


VORTAC RZS 114.9 Chan 96	APP CRS 097°	Rwy Idg TDZE Apt Elev	N/A N/A 674
--	------------------------	-----------------------------	--

VOR or GPS-B
SANTA YNEZ (IZA)

<p>▽ Obtain local altimeter setting on CTAF, when not received, except for operators with approved weather reporting service, use Lompoc altimeter setting and increase all MDAs 540 feet.</p> <p>⚠</p>	<p>MISSED APPROACH: Climbing left turn to 5000 via heading 260° and GVO R-307 and MQO R-126 to ORCUT INT.</p>
---	---

AWOS-3 118.075	SANTA BARBARA APP CON* 124.15 327.8	UNICOM 122.8 (CTAF) 0
--------------------------	---	--



<p>Remain within 10 NM</p> <p>3500</p> <p>277°</p> <p>097°</p> <p>3000</p> <p>4.6 NM</p>				<p>5000</p> <p>hdg 260°</p> <p>GVO R-307</p> <p>MQO R-126</p> <p>ORCUT</p> <p>(MARNV) RZS 16.4</p>	<p>ELEV 674</p> <p>097° 4.6 NM from FAF</p> <p>0.7% UP</p> <p>2803 X 75</p> <p>REIL Rwy 8 and 26</p> <p>MIRL Rwy 8-26</p>
CATEGORY	A	B	C	D	FAF to MAP 4.6 NM
CIRCLING	1880-1¼ 1206 (1300-1¼)	1880-1½ 1206 (1300-1½)	NA		Knots 60 90 120 150 180 Min:Sec 4:36 3:04 2:18 1:50 1:32