

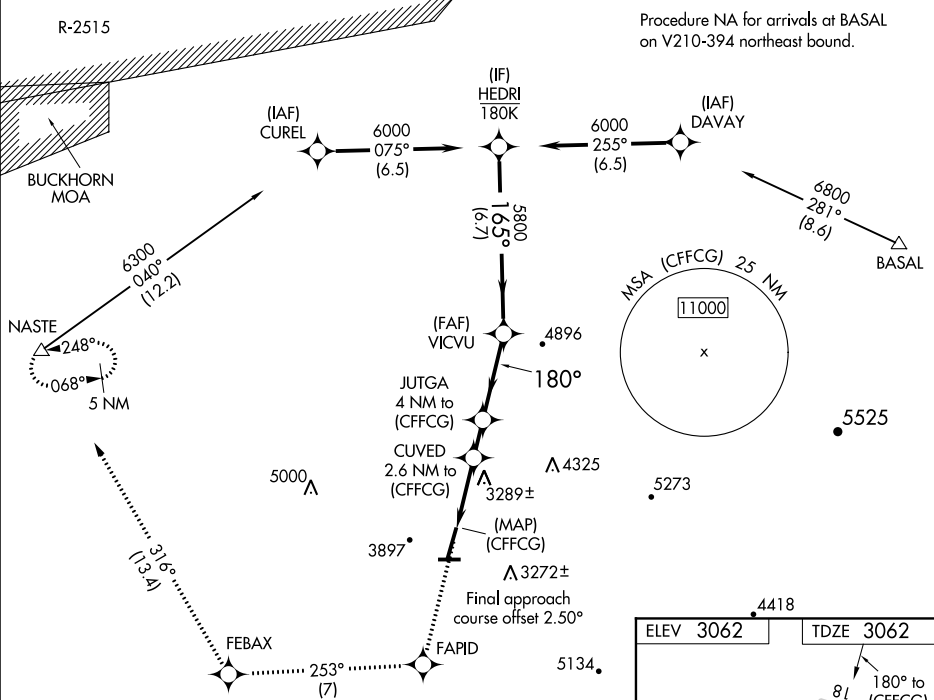
WAAS CH <b>63102</b> <b>W18A</b>	APP CRS <b>180°</b>	Rwy Idg TDZE <b>3062</b> Apt Elev <b>3062</b>
--	------------------------	---

RNAV (GPS) RWY 18

APPLE VALLEY (APV)

RNP APCH.	<p>Circling NA to Rwy 8 and 26. Circling to Rwy 36 NA at night. Rwy 18 helicopter visibility reduction below ¾ SM NA. Use Victorville altimeter setting; if not received, procedure NA.</p>	MISSED APPROACH: Climb to 6000 direct FAPID and track 253° to FEBAX and track 316° to NASTE and hold.
-----------	---	---

VCV AWOS-3 <b>135.475</b>	JOSHUA APP CON <b>124.55 363.0</b>	AUNICOM ★ <b>122.8 (CTAF) 0</b>
---------------------------------	---------------------------------------	------------------------------------



6000	FAPID	FEBAX	NASTE	VGSI and RNAV glidepath not coincident (VGSI Angle 3.50/TCH 49).
↑	✧ tr 253°	✧ tr 316°	△	
* LNAV only		CUVED 2.6 NM to (CFFCG)	JUTGA 4 NM to (CFFCG)	
(CFFCG)			VICVU	HEDRI
			5800	6000
			180°	165°
			4620*	5800
			4100*	
	2.6 NM	1.4 NM	3.2 NM	6.7 NM
CATEGORY	A	B	C	D
LPV DA	3380-7½ 318 (400-7½)			
LNAV MDA	3600-1	538 (600-1)	3600-1½	538 (600-1½)
CIRCLING	4220-1¼ 1158 (1200-1¼)	4440-1½ 1378 (1400-1½)	4740-3	1678 (1700-3)

