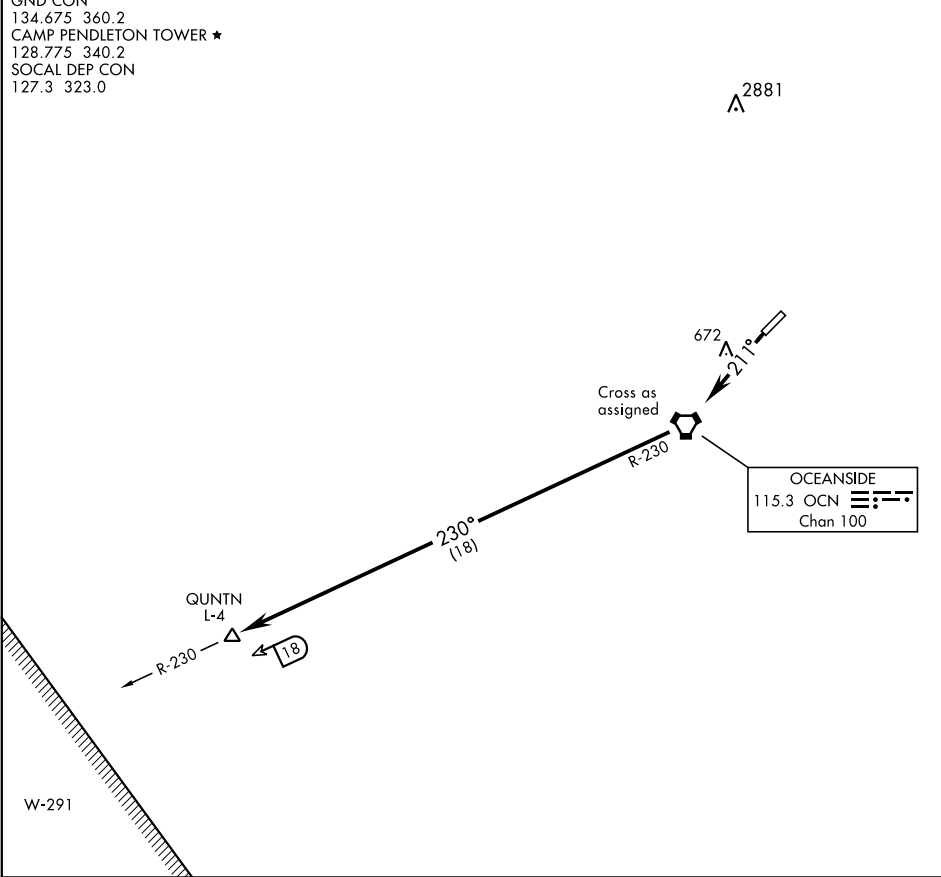


ATIS ★285.45  
CLNC DEL  
134.675 271.6  
GND CON  
134.675 360.2  
CAMP PENDLETON TOWER ★  
128.775 340.2  
SOCAL DEP CON  
127.3 323.0

SL-5985 [USN]

Rwy	Knots	60	120	180	240	300	360
21	V/V(fpm)	482	964	1446	1928	2410	2892

Minimum Climb Rate to 900



▼

DEPARTURE ROUTE DESCRIPTION

TAKE-OFF RWY 21: Climb on heading 211° to 900. Cross OCN VORTAC at assigned altitude, then direct QUNTN.