

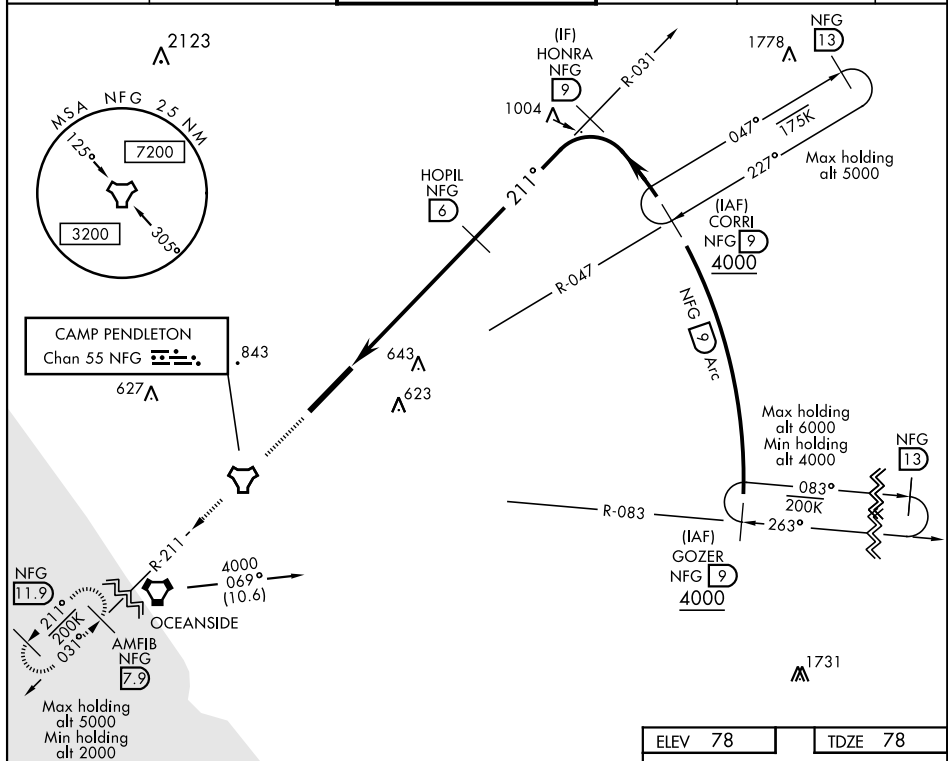
COPTER TACAN RWY 21

TACAN NFG Chan 55	APCH CRS 211°	Rwy Idg 6006 TDZE 78 Arpt Elev 78
-----------------------------	-------------------------	--

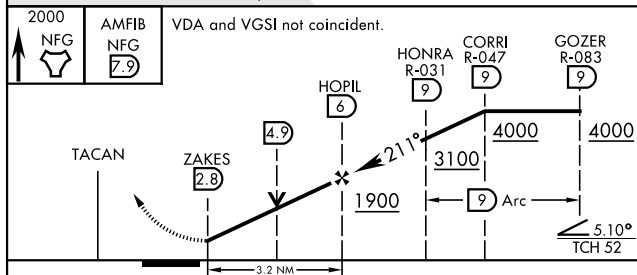
AL-5985 [USN] CAMP PENDLETON MCAS (MUNN FIELD) (KNFG)

<p>I * When ALS inop, increase vis to 1 mile.</p>	<p>SALSF</p> 	<p>MISSED APPROACH: Climb to 2000 direct NFG TACAN then direct AMFIB and hold.</p>
--	--	--

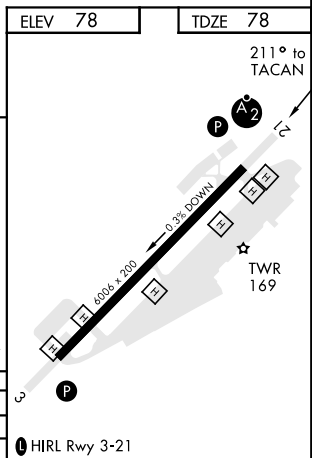
ATIS ★ 285.45	SOCAL APP CON 127.3 323.0	CAMP PENDLETON TOWER ★ 128.775 0 340.2	GND CON 134.675 360.2	CLNC DEL 134.675 271.6	ASR/PAR
------------------	------------------------------	---	--------------------------	---------------------------	---------



EMERG SAFE ALT 100 NM 13,500



CATEGORY	COPTER
H-21*	940- $\frac{3}{4}$ 862 (900- $\frac{3}{4}$)
CIRCLING	NOT AUTHORIZED



OCEANSIDE, CALIFORNIA

33°18'N-117°21'W CAMP PENDLETON MCAS (MUNN FIELD) (KNFG)

Amdt 4 03JAN19

COPTER TACAN RWY 21

SW-3, 03 DEC 2020 to 31 DEC 2020

SW-3, 03 DEC 2020 to 31 DEC 2020