

VORTAC OCN	APCH CRS	Rwy ldg	6006
115.3	026°	TDZE	67
Chan 100		Arpt Elev	78

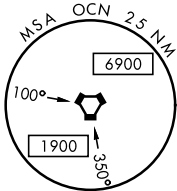
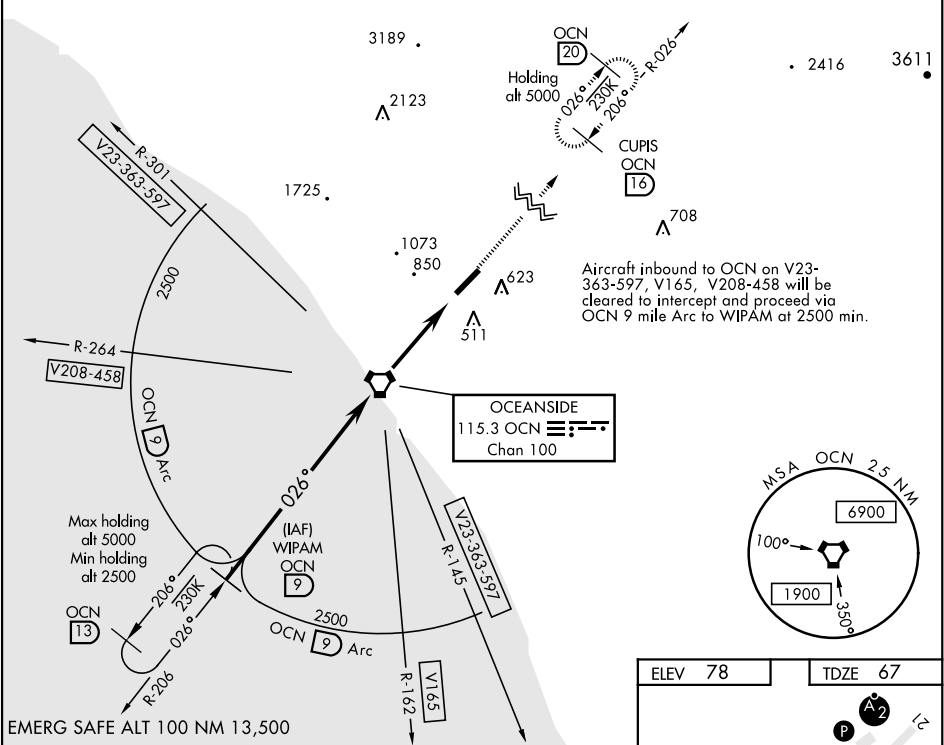
AL-5985 [USN] CAMP PENDLETON MCAS (MUNN FIELD) (KNFG)

TACAN RWY 3

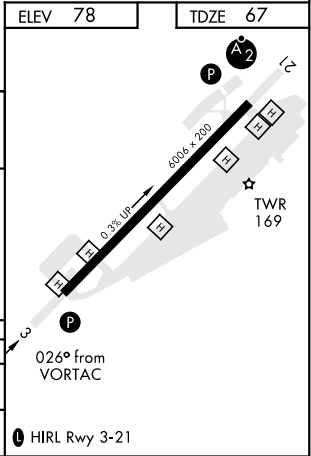
Procedure not authorized at night when VGSI inop.	* MISSED APPROACH: Climb to 4200 and intercept the OCN VORTAC R-026 direct CUPIS and hold.
---	--

ATIS ★ 285.45	SOCAL APP CON 127.3 323.0	CAMP PENDLETON TOWER ★ 128.775 340.2	GND CON 134.675 360.2	CLNC DEL 134.675 271.6	ASR/PAR
------------------	------------------------------	---	--------------------------	---------------------------	---------

CAUTION: High terrain on final approach.	Knots	60	120	180	240	300	360
	V/V(fpm)	275	550	825	1100	1375	1650
	* Min climb of 275 ft/NM to 3500 - Controlling Obstacle 2778						



WIPAM R-206 OCN 9		OCN VORTAC		ZASON OCN 3.8		CUPIS OCN 16	
2500		1600		4200		OCN R-026	
3.25° TCH 50		3.8 NM		.5			
CATEGORY	A	B	C	D			
S-3	960-1¼ 893	(900-1¼)	960-2½ 893	(900-2½)			
CIRCLING	1000-1¼ 922 (1000-1¼)	1180-1½ 1102 (1200-1½)	1400-3 1322	(1400-3)			



TACAN RWY 3

SW-3, 03 DEC 2020 to 31 DEC 2020

SW-3, 03 DEC 2020 to 31 DEC 2020