

WAAS CH 82517 W12A	APP CRS 120°	Rwy Idg 4501 TDZE 413 Apt Elev 425
--	------------------------	---

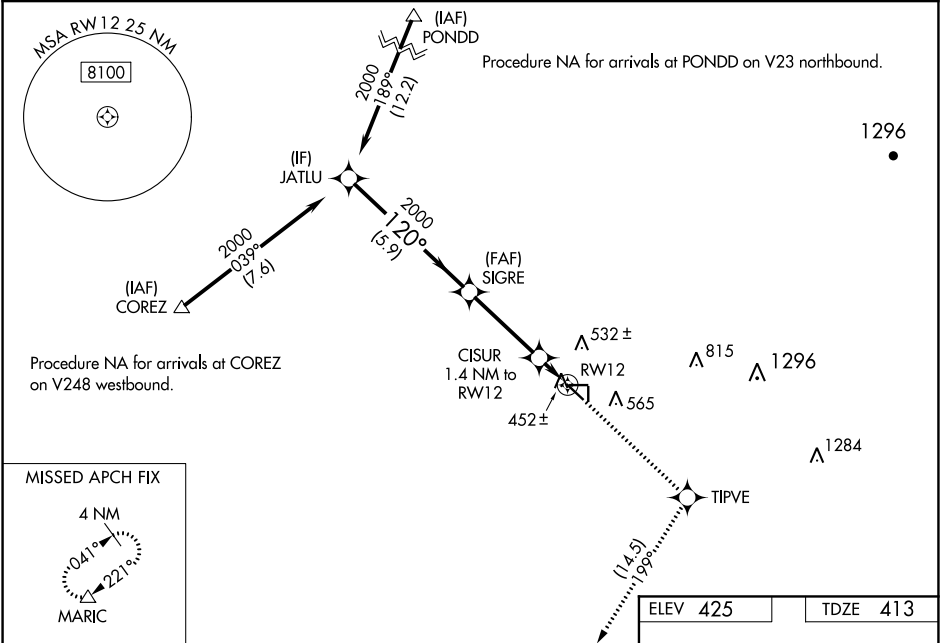
RNAV (GPS) RWY 12

SHAFTER-MINTER FIELD (MIT')

Baro-VNAV NA when using Bakersfield altimeter setting. For uncompensated Baro-VNAV systems, LNAV/VNAV NA below -15°C (5°F) or above 54°C (130°F). When local altimeter setting not received, use Bakersfield altimeter setting and increase LPV and LNAV/VNAV DA to 694 feet and LNAV/VNAV visibility to ¾ all Cats; increase all MDA 40 feet. DME/DME RNP-0.3 NA. Night Landing Rwy 17, 35, 8, 26 NA.

MISSED APPROACH: Climb to 3000 direct TIPVE and on track 199° to MARIC and hold.

AWOS-3 121.125	BAKERSFIELD APP CON 126.45 270.3	CTAF 122.9
--------------------------	--	----------------------



JATLU		SIGRE		3000	TIPVE	tr 199°	MARIC
2000		2000		*LNAV only			
GP 3.00° TCH 45		CISUR 1.4 NM to RW12		*0.8 NM to RW12			
5.9 NM		3.4 NM		0.6 NM	0.8 NM	RW12	
CATEGORY	A	B	C	D			
LPV DA	663-¾ 250 (300-¾)			NA			
LNAV/ VNAV	663-¾ 250 (300-¾)			NA			
LNAV MDA	720-1 307 (300-1)			NA			
CIRCLING	900-1	475 (500-1)	900-1½ 475 (500-1½)	NA			

ELEV 425

TDZE 413

120° to
RW12

3672 X 60

0.3% UP

26

2970 X 100

0.3% UP

30

35

MIRL Rwy 12-30
REIL Rws 12 and 30