

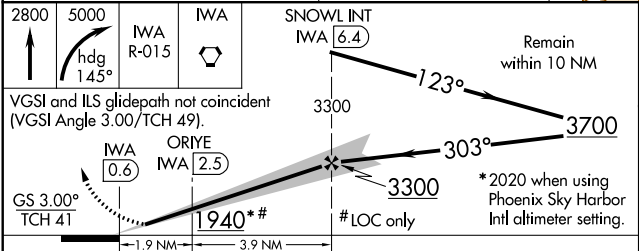
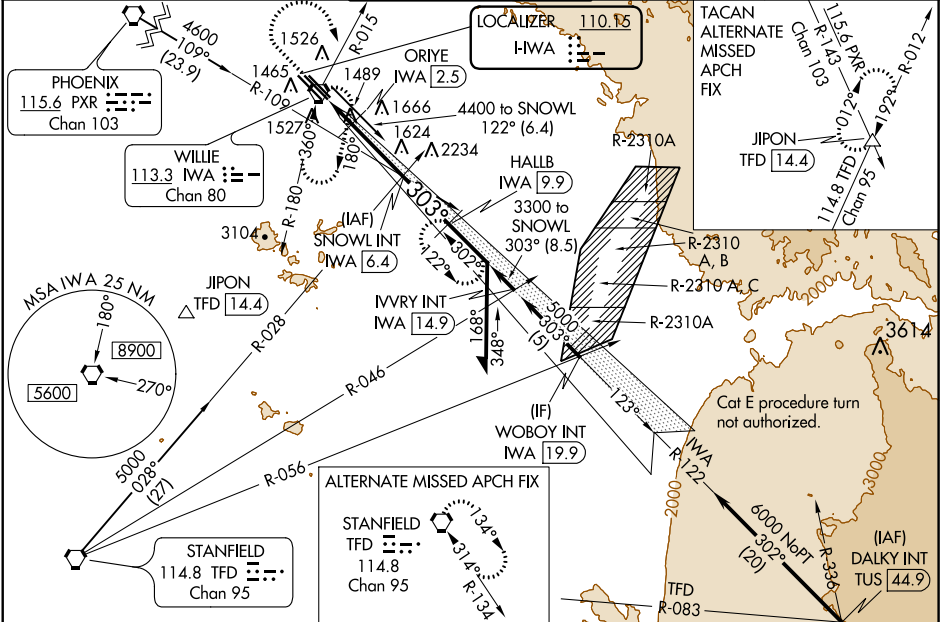
LOC I-HWA	APP CRS	Rwy Idg	10201
110.15	303°	TDZE	1380
		Apt Elev	1382

ILS or LOC RWY 30C
PHOENIX-MESA GATEWAY (IWA)

When local altimeter setting not received, use Phoenix Sky Harbor Intl altimeter setting and increase all DA/MDA 80 feet, increase S-ILS 30C, S-LOC 30C all Cats visibility ¼ mile, Circling Cats A/B/C visibility ¼ mile, Cat E ½ mile.

MISSED APPROACH: Climb to 2800 then climbing right turn to 5000 via heading 145° and IWA VORTAC R-015 to IWA VORTAC and hold, continue climb-in-hold to 5000 (TACAN aircraft continue via IWA VORTAC R-122 to HALLB/9.9 DME and hold, continue climb-in-hold to 5000, hold SE, LT, 302° inbound).

ATIS★	PHOENIX APP CON	GATEWAY TOWER★	GND CON	CLNC DEL
133.5 270.275	124.9 353.8	120.6 (CTAF) 289.4	128.25 275.8	135.05



CATEGORY	A	B	C	D	E
S-ILS 30C			1580-¾	200 (200-¾)	
S-LOC 30C	1940-1	560 (600-1)	1940-1½	1940-1¾	1940-2
CIRCLING	1940-1	558 (600-1)	1940-1½	1940-2	2020-2¼
ORIE FIX MINIMUMS					
S-LOC 30C	1800-1	420 (500-1)	1800-1¼	420 (500-1¼)	1800-1½
CIRCLING	1880-1	498 (500-1)	1880-1½	1940-2	2020-2¼

