

WAAS CH <b>69343</b> <b>W30D</b>	APP CRS <b>303°</b>	Rwy Idg <b>9300</b> TDZE <b>1384</b> Apt Elev <b>1384</b>
--	------------------------	---

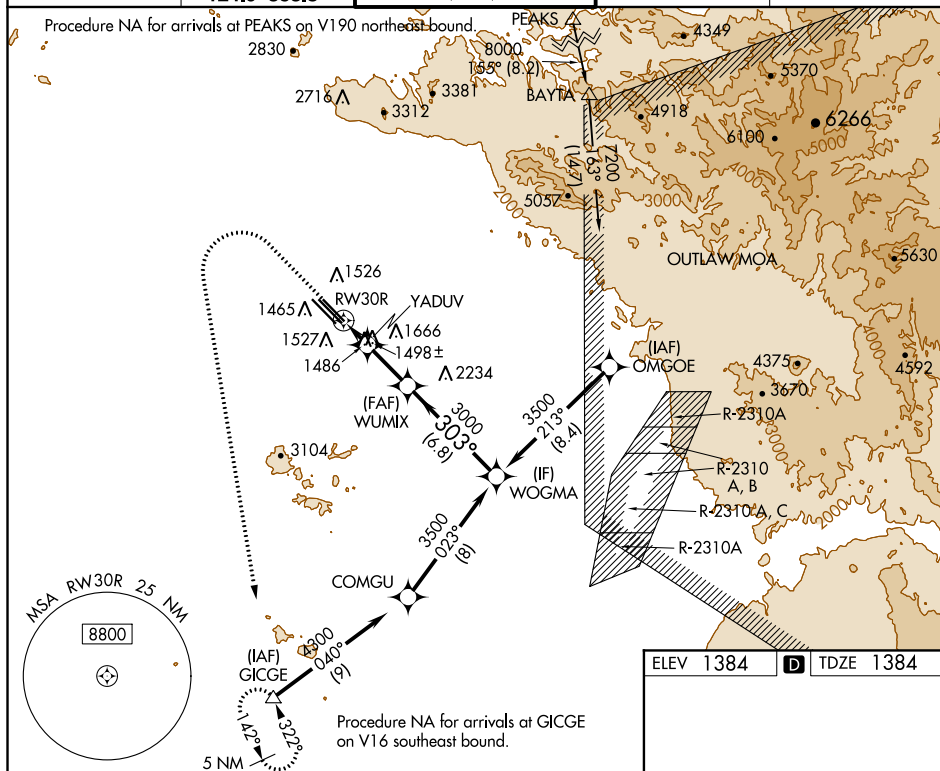
RNAV (GPS) RWY 30R  
PHOENIX-MESA GATEWAY (IWA)

RNP APCH.

**T** For uncompensated Baro-VNAV systems, LNAV/VNAV NA below -17°C or above 54°C.

**MISSED APPROACH:** Climb to 2800 then climbing left turn to 5000 direct to GICGE and hold.

ATIS ★ 133.5 270.275	PHOENIX APP CON 124.9 353.8	GATEWAY TOWER ★ 120.6 (CTAF) 289.4	GND CON 128.25 275.8	CLNC DEL 135.05
-------------------------	--------------------------------	---------------------------------------	-------------------------	--------------------



2800 ↑	5000 ↘	GICGE △	VGS1 and RNAV glidepath not coincident (VGS1 Angle 3.00/TCH 75).		WOGMA
*LNAV only			YADUV	WUMIX	3500
			3000	3000	
0.9 NM			0.9 NM	3.1 NM	6.8 NM
CATEGORY	A	B	C	D	
LPV DA	1584- <sup>3</sup> / <sub>4</sub> 200 (200- <sup>3</sup> / <sub>4</sub> )				
LNAV/ VNAV DA	1634- <sup>3</sup> / <sub>4</sub> 250 (300- <sup>3</sup> / <sub>4</sub> )				
LNAV MDA	1740-1 356 (400-1)				
<b>C</b> CIRCLING	1840-1	456 (500-1)	1880-1 <sup>1</sup> / <sub>2</sub> 496 (500-1 <sup>1</sup> / <sub>2</sub> )	2000-2 616 (700-2)	

