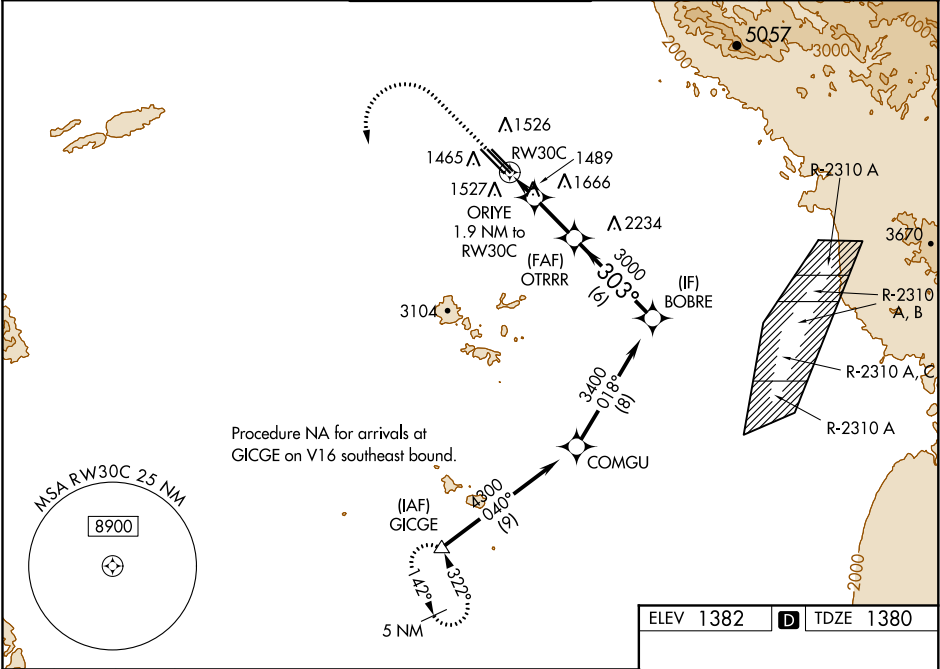


WAAS CH 62911 W30A	APP CRS 303°	Rwy Idg 10201 TDZE 1380 Apt Elev 1382
--	------------------------	--

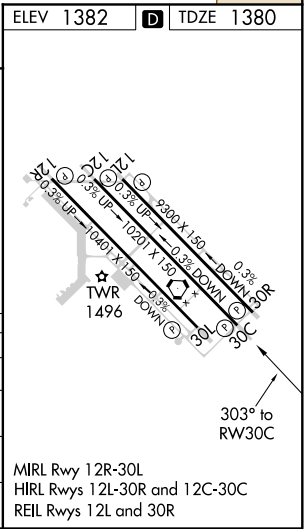
RNAV (GPS) Y RWY 30C
PHOENIX-MESA GATEWAY (IWA)

<p>⚠ For uncompensated Baro-VNAV systems, LNAV/VNAV NA below -2°C (29°F) or above 35°C (95°F). DME/DME RNP-0.3 NA. When local altimeter setting not received, use Phoenix Sky Harbor Intl altimeter setting and increase all DA and MDA 80 feet, increase LPV all Cats visibility ½ mile and LNAV/VNAV all Cats, LNAV Cats C, D, and E, and Circling Cat E ¼ mile. VDP and Baro-VNAV NA with Phoenix Sky Harbor Intl altimeter setting.</p>	<p>MISSED APPROACH: Climb to 2800 then climbing left turn to 5000 direct GICGE and hold.</p>
--	---

ATIS ★ 133.5 270.275	PHOENIX APP CON 124.9 353.8	GATEWAY TOWER ★ 120.6 (CTAF) 289.4	GND CON 128.25 275.8	CLNC DEL 135.05
--------------------------------	---------------------------------------	--	--------------------------------	---------------------------



<div>2800</div> <div>5000</div> <div>GICGE</div> <div><div>↑</div><div>↖</div><div>△</div></div>		VGSI and RNAV glidepath not coincident (VGSI Angle 3.00/TCH 49).				
<div>* LNAV only.</div> <div><div><div><div></div><div></div><div></div></div><div><div></div><div></div><div></div></div></div><div><div>ORIYE</div><div>1.9 NM to RW30C</div></div><div><div>* 1.2 NM to RW30C</div><div>↓</div></div><div><div>RW30C</div><div>↖</div></div><div><div>2020*</div></div><div><div>OTRRR</div><div>3000</div><div>×</div></div><div><div>BOBRE</div><div>3400</div></div><div><div>GP 3.00°</div><div>TCH 42</div></div><div><div>1.2 NM</div><div>0.7</div><div>3.1 NM</div><div>6 NM</div></div></div>						
CATEGORY		A	B	C	D	E
LPV	DA	1580- ³ / ₄ 200 (200- ³ / ₄)				
LNAV/ VNAV	DA	1630- ⁷ / ₈ 250 (300- ⁷ / ₈)				
LNAV MDA		1800-1 420 (500-1)	1800-1½ 420 (500-1½)			
CIRCLING		1880-1 498 (500-1)	1880-1½ 498 (500-1½)	1940-2 558 (600-2)	2040-2¼ 658 (700-2¼)	



SW-4, 03 DEC 2020 to 31 DEC 2020

SW-4, 03 DEC 2020 to 31 DEC 2020